


APP CRS	Rwy Ldg	9501
117°	TDZE	3200
	Apt Elev	3206


RNAV (RNP) Z RWY 12

MISSOULA MONTANA (MISO)

RNP AR APCH.




For uncompensated Baro-VNAV systems, LNAV/VNAV NA below -21° C (-6°F) or above 43°C (109°F).



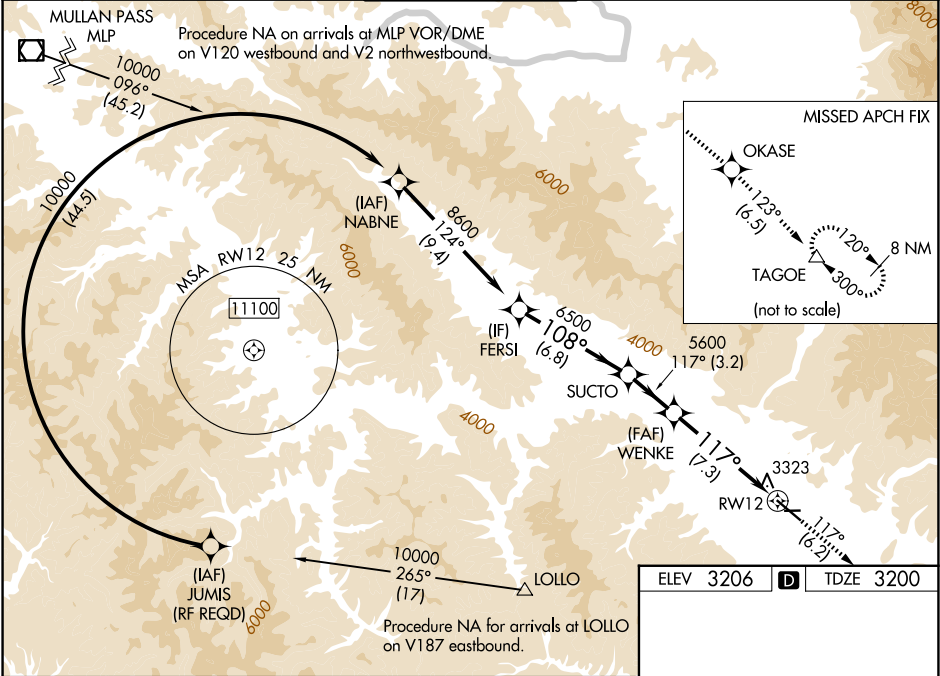
For inop ALS, increase RNP 0.12 all Cats visibility to RVR 6000. For inop ALS, increase RNP 0.30 all Cats visibility to 2½ SM. When local weather not received, procedure NA.

MALSR

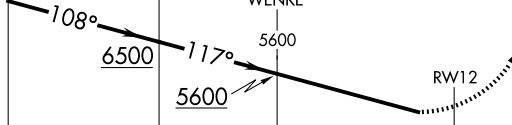


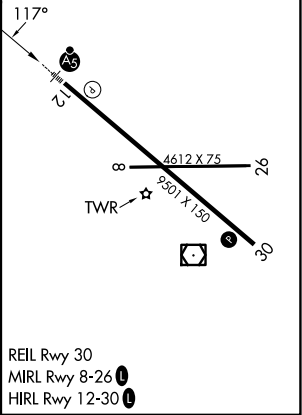
MISSED APPROACH: Climb to 13000 on track 117° to OKASE and on track 123° to TAGOE and hold, continue climb-in-hold to 13000.
*Missed approach requires minimum climb of 350 feet per NM to 8300; if unable to meet climb gradient, see RNAV (GPS) Y RWY 12.
#Missed approach requires minimum climb of 425 feet per NM to 8300.

ATIS	SPOKANE APP CON*	MISSOULA TOWER*	GND CON	UNICOM
126.65	124.9 298.95	118.4 (CTAF) 0 377.175	121.9	122.95



ELEV 3206	TDZE 3200
-----------	-----------

VGSI and RNAV glidepath not coincident (VGSI Angle 3.00/TCH 55).				
FERSI	SUCTO	WENKE	OKASE	TAGOE
8600		5600	13000 ↑ tr 117°	tr 123° ✦
GP 3.00° TCH 45		5600		△
				
CATEGORY	A	B	C	D
RNP 0.12 DA#	3518/40 318 (400-¾)			
RNP 0.30 DA*	3880-2 680 (700-2)			
AUTHORIZATION REQUIRED				



NW-1, 07 AUG 2025 to 04 SEP 2025

NW-1, 07 AUG 2025 to 04 SEP 2025