

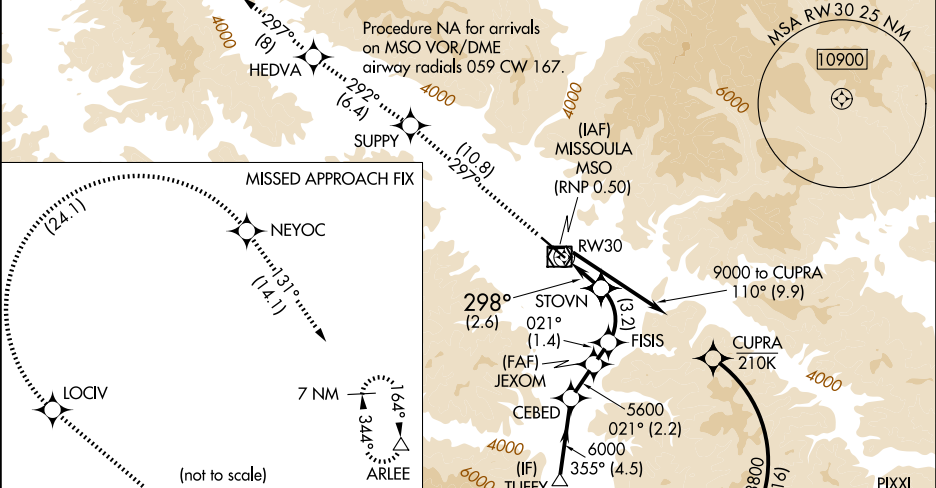
APP CRS	Rwy Ldg	9501
298°	TDZE	3206
	Apt Elev	3206

RNAV (RNP) RWY 30

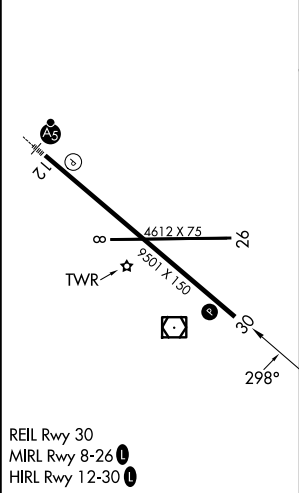
MISSOULA MONTANA (MSO)

RNP AR APCH. RF required.	MISSED APPROACH: Climb to 11000 on track 297° to SUPPY and on track 292° to HEDVA and on track 297° to LOCIV, then right turn to NEYOC and on track 131° to ARLEE and hold. *Misted approach requires minimum climb of 215 feet per NM to 5000.
<div><div>▼</div><div>▲</div><div>☒</div></div> <div><div>For uncompensated Baro-VNAV systems, procedure NA below -21°C (-5°F) or above 43°C (109°F). When local altimeter setting not received, procedure NA.</div><div>-11°C</div></div>	

ATIS	SPOKANE APP CON *	MISSOULA TOWER *	GND CON	UNICOM
126.65	124.9 298.95	118.4 (CTAF) 0 377.175	121.9	122.95



ELEV 3206	D	TDZE 3206
-----------	---	-----------



11000 ↑ tr 297°	SUPPY ✧	tr 292°	HEDVA ✧					
				FISIS 5135	JEXOM 5600	CEBED	TUFFY	
RW30 298°				STOVN 4089	021°	021°	355°	6600
					5600	6000		GP 3.00° TCH 50
2.6 NM				3.2 NM	1.4 NM	2.2 NM	4.5 NM	
CATEGORY	A		B		C		D	
RNP 0.30 DA *	3524-1 318 (400-1)							
RNP 0.30 DA	3582-1¼ 376 (400-1¼)							
AUTHORIZATION REQUIRED								

NW-1, 07 AUG 2025 to 04 SEP 2025

NW-1, 07 AUG 2025 to 04 SEP 2025