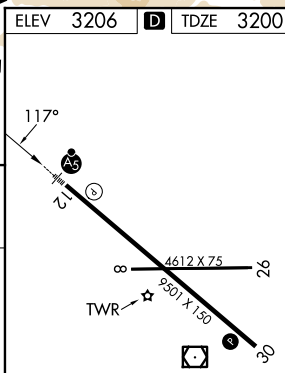
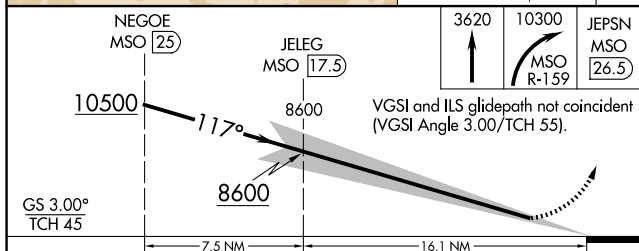
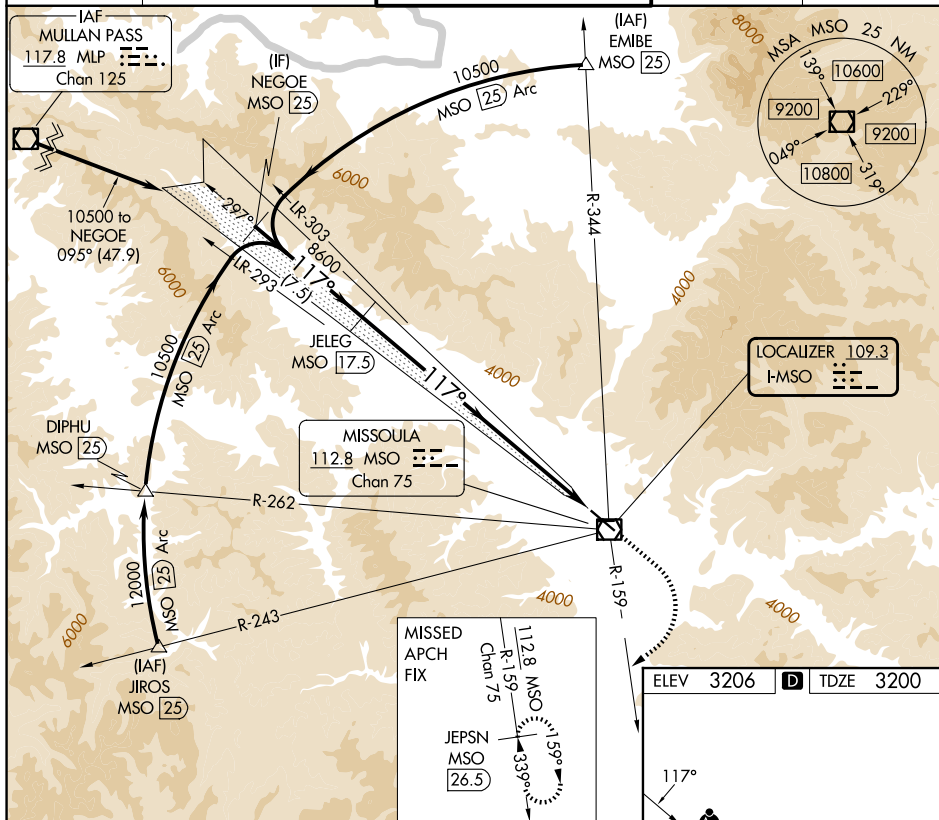


ILS Z RWY 12
MISSOULA MONTANA (MSO)

MISSED APPROACH: Climb to 3620 then climbing right turn to 10300 on MSO VOR/DME R-159 to JEPSN/MSO 26.5 DME and hold. Missed approach requires minimum climb of 410 feet per NM to 9800; if unable to meet climb gradient, see ILS Y RWY 12.

UNICOM
122.95

CATEGORY	A	B	C	D
S-ILS 12	3411/24 211 (300-½)			

REIL Rwy 30
MIRL Rwy 8-26 **L**
HIRL Rwy 12-30 **L**