

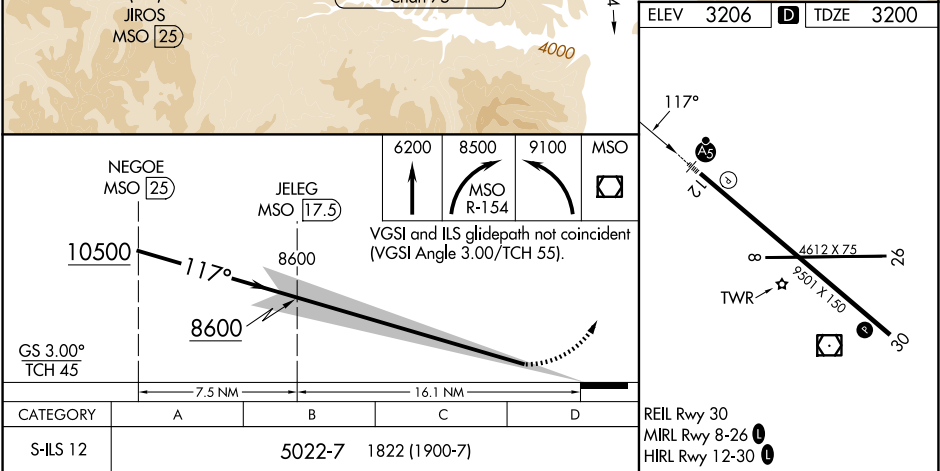
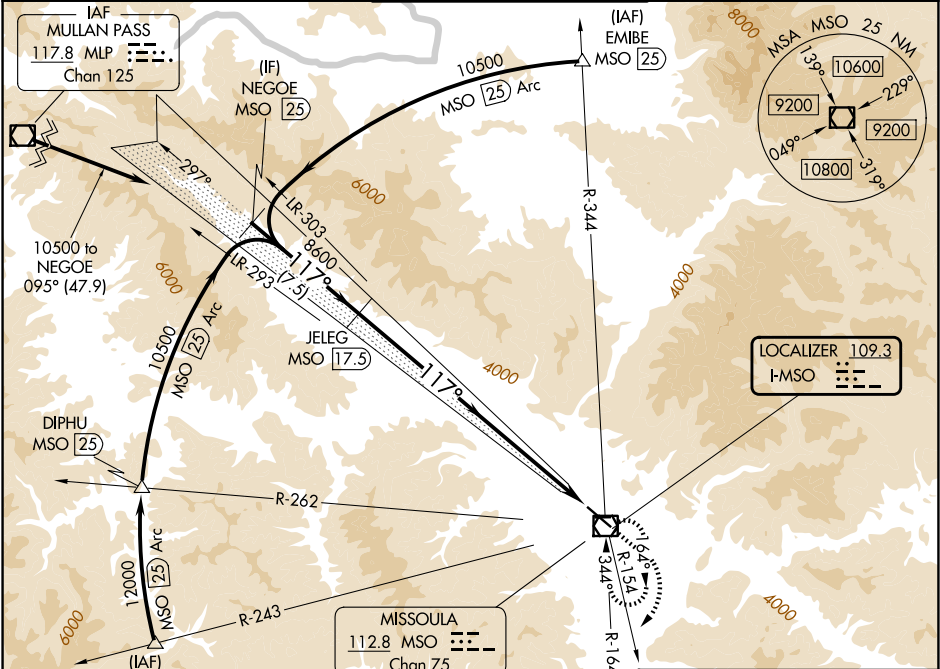
|           |         |          |      |
|-----------|---------|----------|------|
| LOC I-MSO | APP CRS | Rwy Ldg  | 9501 |
| 109.3     | 117°    | TDZE     | 3200 |
|           |         | Apt Elev | 3206 |

ILS Y RWY 12

MISSOULA MONTANA (MSO)

|   |  |       |   |
|---|--|-------|---|
| DME required.                           |  | MALSR | MISSED APPROACH: Climb to 6200 then climbing right turn to 8500 on MSO VOR/DME R-154 then climbing left turn to 9100 direct MSO VOR/DME and hold. |
| NA<br>Inoperative table does not apply. |  |       |   |

|        |                   |                      |         |        |
|--------|-------------------|----------------------|---------|--------|
| ATIS   | SPOKANE APP CON * | MISSOULA TOWER *     | GND CON | UNICOM |
| 126.65 | 124.9 298.95      | 118.4 (CTAF) 377.175 | 121.9   | 122.95 |



NW-1, 07 AUG 2025 to 04 SEP 2025

NW-1, 07 AUG 2025 to 04 SEP 2025