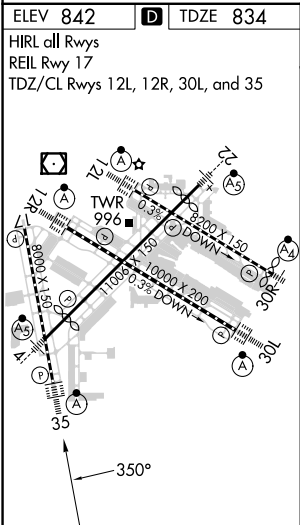
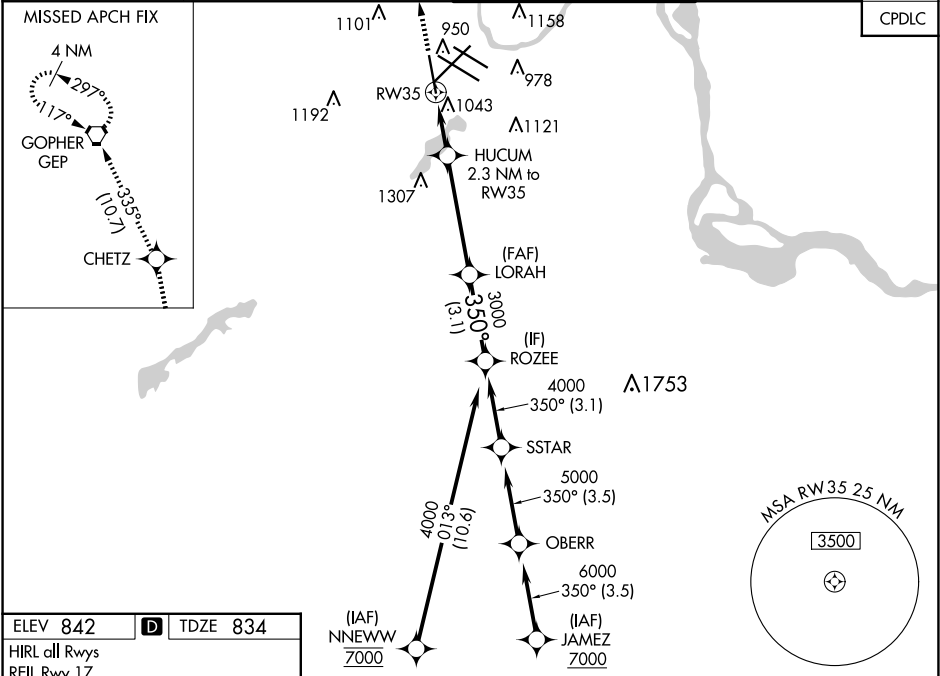




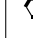
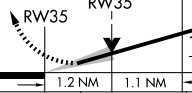

WAAS CH 90128 W35A	APP CRS 350°	Rwy Idg 8000 TDZE 834 Apt Elev 842
--	------------------------	---

RNAV (GPS) Z RWY 35
MINNEAPOLIS-ST PAUL INTL/WOLD-CHAMBERLAIN (MSP)

<p>⚠ For uncompensated Baro-VNAV systems, LNAV/VNAV NA below -19°C (-2°F) or above 54°C (130°F). DME/DME RNP-0.3 NA. For inop ALS, increase LPV Cat E visibility to RVR 4000, LNAV/VNAV Cat E visibility to 1¼ SM and LNAV Cats C/D/E visibility to 1¾ SM.</p>	ALSF-2 	MISSED APPROACH: Climb to 3000 direct CHETZ and on track 335° to GEP VORTAC and hold.
--	------------	---

D-ATIS ARR 135.35 239.275 DEP 120.8	MINNEAPOLIS APP CON 118.725 335.65 (Rwy 35) 119.3 335.65 (12L-30R, 4-22, 17) 126.95 335.65 (12R-30L)	MINNEAPOLIS TOWER 123.675 273.55 (17-35) 123.95 273.55 (12L-30R) 126.7 273.55 (12R-30L, 4-22)	GND CON N 121.8 348.6 S 121.9 348.6 W 127.925 348.6	CLNC DEL 133.2
---	--	---	---	--------------------------



3000	CHETZ	GEP	VGSI and RNAV glidepath not coincident (VGSI Angle 3.00/TCH 71).			ROZEE
		tr 335°				
*LNAV only		HUCUM 2.3 NM to RW35		LORAH 3000	350°	4000
		*1.2 NM to RW35		3000	3000	GP 3.00° TCH 55
1.2 NM		1.1 NM	4.3 NM	3.1 NM		
CATEGORY	A	B	C	D	E	
LPV	DA	1034/18 200 (200-½)				
LNAV/ VNAV	DA	1204/40 370 (400-¾)				
LNAV	MDA	1300/24 466 (500-½)	1300/50 466 (500-1)			
 CIRCLING	1360-1 518 (600-1)	1460-1¾ 618 (700-1¾)	1660-2¾ 818 (900-2¾)	1800-3 958 (1000-3)		