

WAAS CH 45525 W12B	APP CRS 121°	Rwy Idg TDZE Apt Elev	7620 841 842
--	------------------------	-----------------------------	---

RNAV (GPS) Z RWY 12L

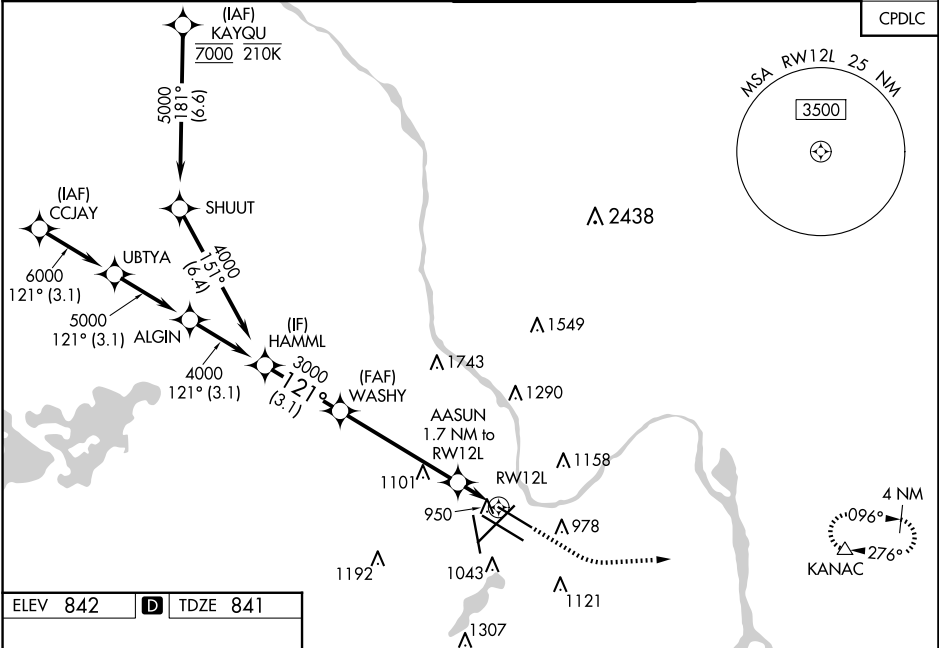
MINNEAPOLIS-ST PAUL INTL/WOLD-CHAMBERLAIN (MSP)

⚠ For uncompensated Baro-VNAV systems, LNAV/VNAV NA below -20°C (-4°F) or above 54°C (130°F). Simultaneous approach authorized with Rwy 12R. Use of FD or AP providing RNAV track guidance required during simultaneous operations. LNAV procedure NA during simultaneous operations. DME/DME RNP-0.3 NA. For inop ALS, increase LPV Cat E visibility to RVR 4000, LNAV/VNAV Cat E visibility to 1 1⁄4 SM, LNAV Cats C/D/E visibility to RVR 6000.

ALS-2

⚠ MISSED APPROACH: Climb to 1300, then climbing left turn to 3000 direct KANAC and hold.

D-ATIS	MINNEAPOLIS APP CON	MINNEAPOLIS TOWER	GND CON	CLNC DEL
ARR 135.35 239.275	118.725 335.65 (Rwy 35)	123.675 273.55 (17-35)	N 121.8 348.6	133.2
DEP 120.8	119.3 335.65 (12L-30R, 4-22, 17)	123.95 273.55 (12L-30R)	S 121.9 348.6	
	126.95 335.65 (12R-30L)	126.7 273.55 (12R-30L, 4-22)	W 127.925 348.6	



ELEV 842

D TDZE 841

HIRL all Rwys

REIL Rwy 17

TDZ/CL Rwys 12L, 12R, 30L, and 35

VGSI and RNAV glidepath not coincident (VGSI Angle 3.00°/TCH 79°).					
*LNAV only					
CATEGORY	A	B	C	D	E
LPV DA	1041/18 200 (200-1⁄2)				
LNNAV/VNAV DA	1211/40 370 (400-3⁄4)				
LNNAV MDA	1260/24 419 (500-1⁄2)		1260/40 419 (500-3⁄4)		
CIRCLING	1360-1 518 (600-1)		1460-1 3⁄4 618 (700-1 3⁄4)	1660-2 3⁄4 818 (900-2 3⁄4)	1800-3 958 (1000-3)