

APP CRS	Rwy Idg	8000
350°	TDZE	834
	Apt Elev	842

RNAV (RNP) Y RWY 35

MINNEAPOLIS-ST PAUL INTL/WOLD-CHAMBERLAIN (MSP)

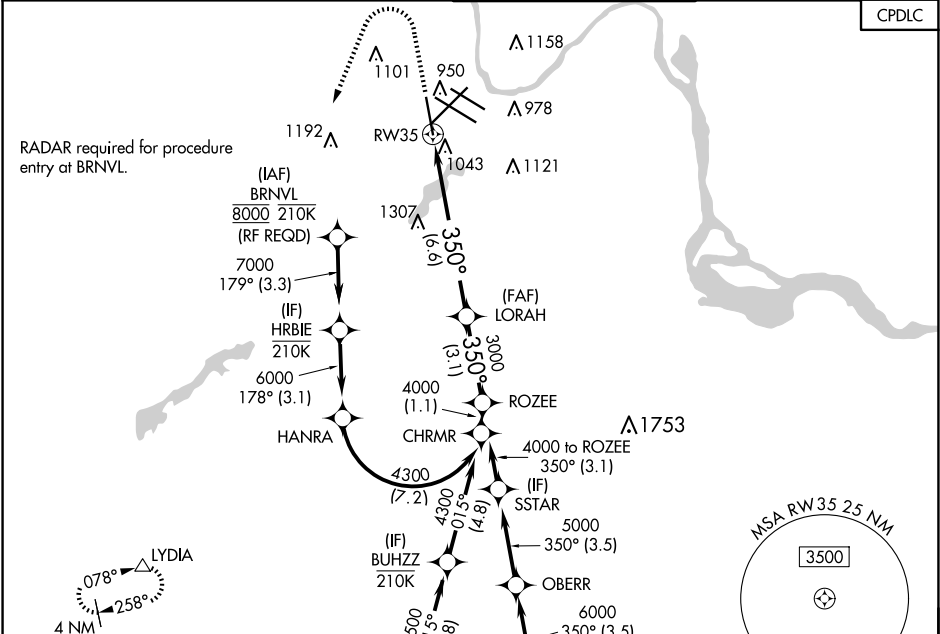
▼

For uncompensated Baro-VNAV systems, procedure NA below -19°C (-2°F) or above 54°C (130°F). For inop ALSF, increase RNP 0.30 all Cats visibility to 1½ miles. GPS required.

ALSF-2

MISSED APPROACH: Climb to 1300 then climbing left turn to 3000 direct LYDIA and hold.

D-ATIS	MINNEAPOLIS APP CON	MINNEAPOLIS TOWER	GND CON	CLNC DEL
ARR 135.35 239.275	118.725 335.65 (Rwy 35)	123.675 273.55 (17-35)	N 121.8 348.6	133.2
DEP 120.8	119.3 335.65 (12L-30R, 4-22, 17)	123.95 273.55 (12L-30R)	S 121.9 348.6	
	126.95 335.65 (12R-30L)	126.7 273.55 (12R-30L, 4-22)	W 127.925 348.6	






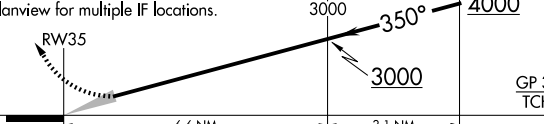
ELEV 842

TDZE 834

HIRL all Rwys

REIL Rwy 17

TDZ/CL Rwys 12L, 12R, 30L, and 35

1300	3000	LYDIA	VGSI and RNAV glidepath not coincident (VGSI Angle 3.00/TCH 71).	
				
See planview for multiple IF locations.				
				
CATEGORY	A	B	C	D
RNP 0.11 DA	1213/40 379 (400-¾)			
RNP 0.16 DA	1291/60 457 (500-1¼)			
RNP 0.30 DA	1345-1¼ 511 (600-1¼)			

AUTHORIZATION REQUIRED