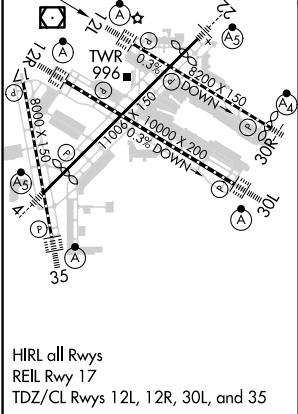
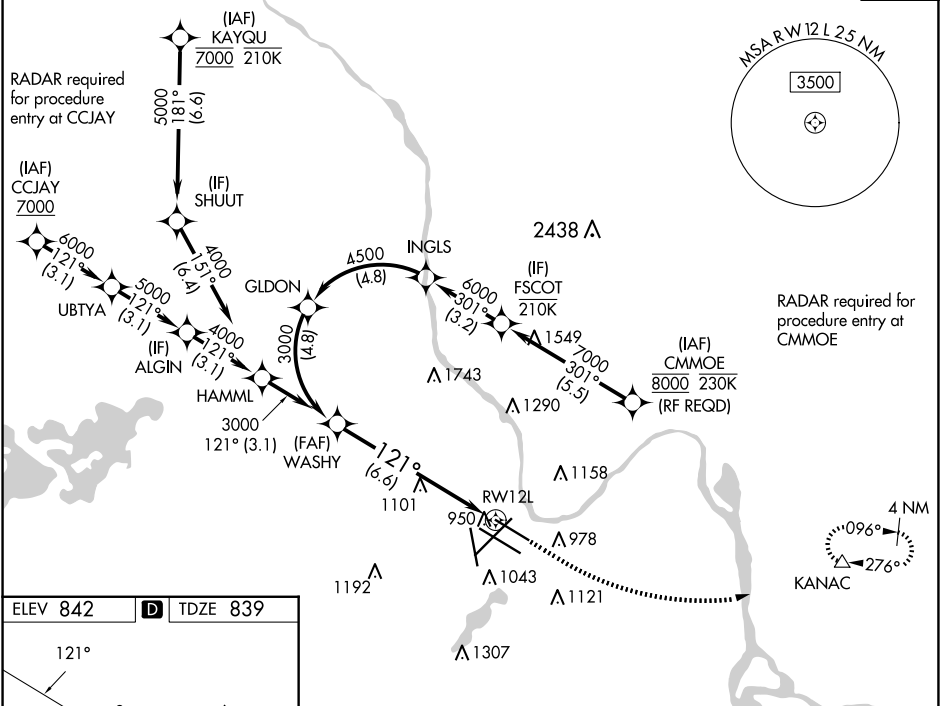


APP CRS	Rwy Idg	7620
121°	TDZE	839
	Apt Elev	842

RNAV (RNP) Y RWY 12L
MINNEAPOLIS-ST PAUL INTL/WOLD-CHAMBERLAIN (MSP)

<div>▼</div>	For uncompensated Baro-VNAV systems, procedure NA below -20°C (-4°F) or above 54°C (130°F). GPS required.			<div>ALSIF-2</div> <div><div><div></div></div><div><div></div></div></div>		MISSED APPROACH: Climb to 1300 then climbing left turn to 3000 direct KANAC and hold.			
	D-ATIS		MINNEAPOLIS APP CON		MINNEAPOLIS TOWER		GND CON		CLNC DEL
	ARR 135.35 239.275		118.725 335.65 (Rwy 35)		123.675 273.55 (17-35)		N 121.8 348.6		
	DEP 120.8		119.3 335.65 (12L-30R, 4-22, 17)		123.95 273.55 (12L-30R)		S 121.9 348.6		
			126.95 335.65 (12R-30L)		126.7 273.55 (12R-30L, 4-22)		W 127.925 348.6		
									133.2
								CPDLC	



		1300	3000	KANAC
GP 3.00° TCH 52		VGSI and RNAV glidepath not coincident (VGSI Angle 3.00/TCH 79°).		
CATEGORY	A	B	C	D
RNP 0.15 DA	1150/24 311 (400-½)			
RNP 0.30 DA	1241/45 402 (400-⅔)			
AUTHORIZATION REQUIRED				