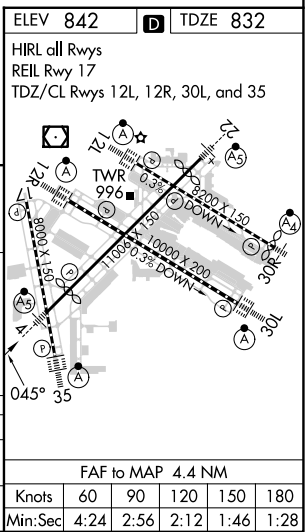
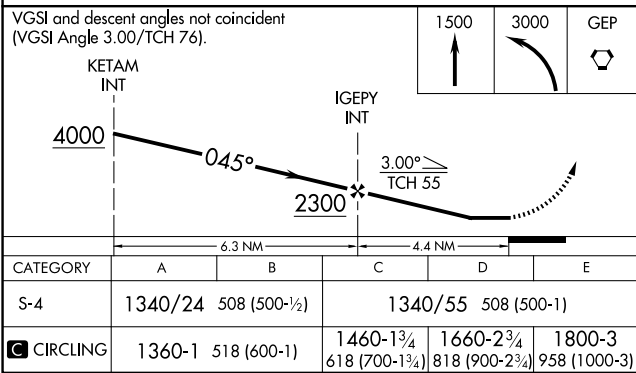
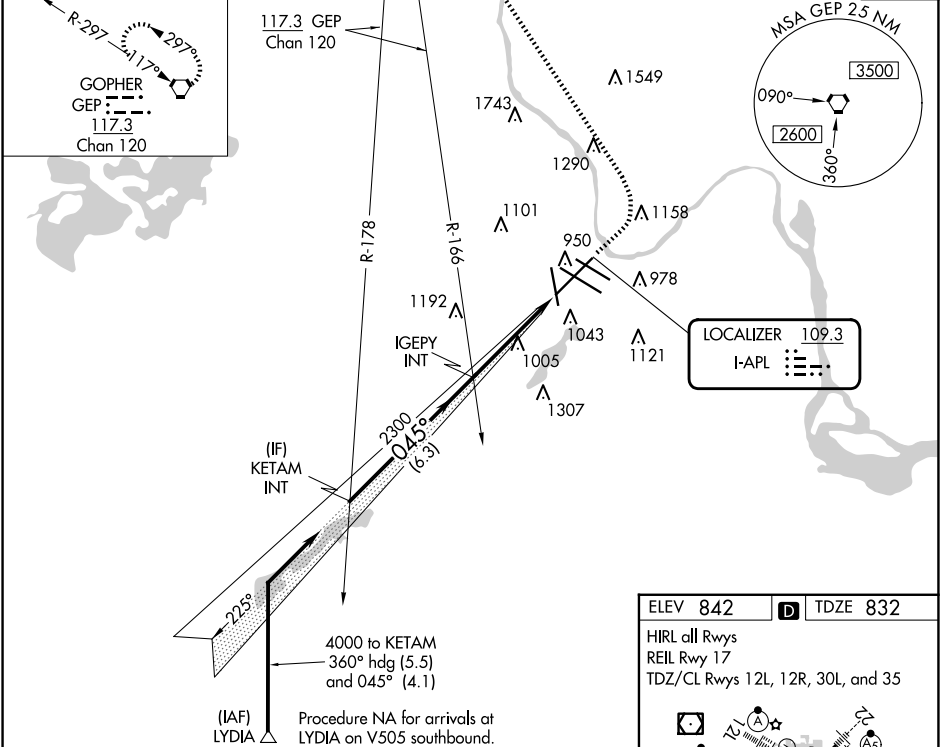


LOC I-APL 109.3	APP CRS 045°	Rwy Idg 9456 TDZE 832 Apt Elev 842
---------------------------	------------------------	---

LOC RWY 4

MINNEAPOLIS-ST PAUL INTL/WOLD-CHAMBERLAIN (MSP)

 For inop ALS, increase S-4 Cat C/D/E visibility to 1 3/8 SM.		 MALSR	MISSED APPROACH: Climb to 1500 then climbing left turn to 3000 direct GEP VORTAC and hold.	
D-ATIS ARR 135.35 239.275 DEP 120.8	MINNEAPOLIS APP CON 118.725 335.65 (Rwy 35) 119.3 335.65 (12L-30R, 4-22, 17) 126.95 335.65 (12R-30L)	MINNEAPOLIS TOWER 123.675 273.55 (17-35) 123.95 273.55 (12L-30R) 126.7 273.55 (12R-30L, 4-22)	GND CON N 121.8 348.6 S 121.9 348.6 W 127.925 348.6	CLNC DEL 133.2
				CPDLC



LOC RWY 4