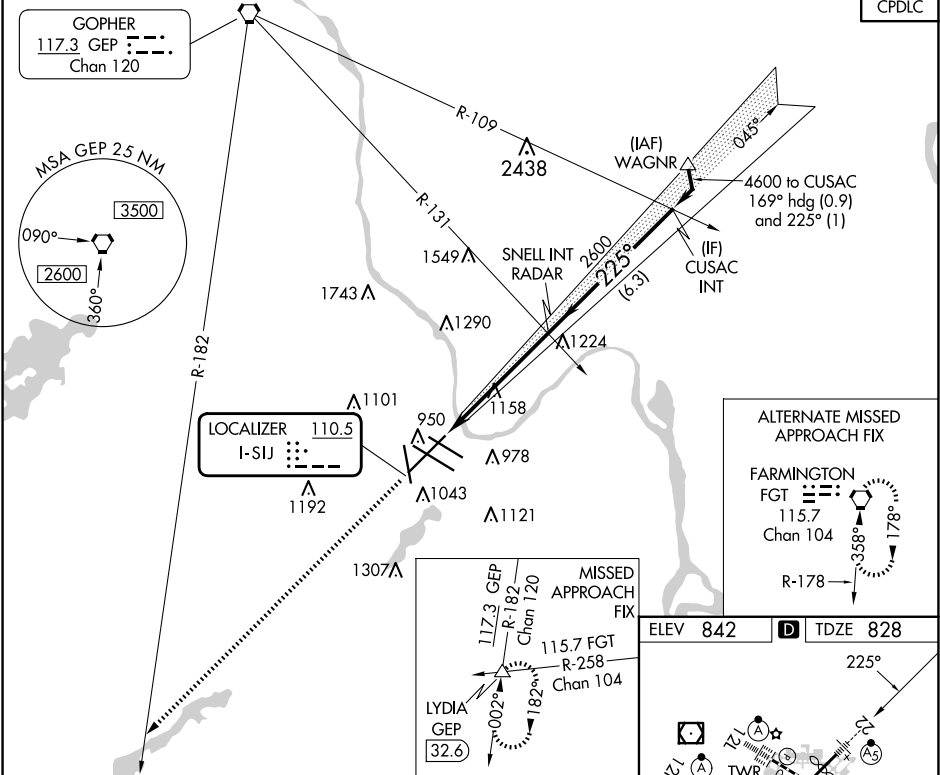


LOC I-SIJ <b>110.5</b>	APP CRS <b>225°</b>	Rwy ldg <b>10006</b> TDZE <b>828</b> Apt Elev <b>842</b>	LOC RWY 22
MINNEAPOLIS-ST PAUL INTL/WOLD-CHAMBERLAIN (MSP)			

<div><div><div></div><div></div></div><div>Rwy 22 helicopter visibility reduction below RVR 4000 NA. For inop ALS, increase S-22 Cat A and B visibility to RVR 5500, and Cat E visibility to 1 1/4 SM.</div></div>	<div>MALSRR</div> <div><div></div><div></div></div>	<div>MISSED APPROACH: Climb to 3000 on heading 225° and GEP VORTAC R-182 to LYDIA INT/GEP 32.6 DME and hold.</div>		
<div>D-ATIS</div> <div>ARR <b>135.35 239.275</b> DEP <b>120.8</b></div>	<div>MINNEAPOLIS APP CON</div> <div><b>118.725 335.65</b> (Rwy 35) <b>119.3 335.65</b> (12L-30R, 4-22, 17) <b>126.95 335.65</b> (12R-30L)</div>	<div>MINNEAPOLIS TOWER</div> <div><b>123.675 273.55</b> (17-35) <b>123.95 273.55</b> (12L-30R) <b>126.7 273.55</b> (12R-30L, 4-22)</div>	<div>GND CON</div> <div><b>N 121.8 348.6</b> <b>S 121.9 348.6</b> <b>W 127.925 348.6</b></div>	<div>CLNC DEL</div> <div><b>133.2</b></div>
<div><div>CORNER</div><div></div></div>				<div>CPDLC</div>



3000

↑

hdg 225°

GEP

R-182

LYDIA

△

SNELL INT RADAR

≤3.00°

TCH 60

2600

225°

4600

CUSAC INT

5.4 NM

6.3 NM

CATEGORY	A	B	C	D	E
S-22	1420/40	592 (600-¾)	1420-1¼	592 (600-1¼)	
<b>C</b> CIRCLING	1420-1	578 (600-1)	1460-1¾ 618 (700-1¾)	1620-2½ 778 (800-2½)	1800-3 958 (1000-3)

MINNEAPOLIS, MINNESOTA

Amtd 2 17JUN21

MINNEAPOLIS-ST PAUL INTL/WOLD-CHAMBERLAIN (MSP)

44°53'N-93°13'W

LOC RWY 22

HIRL all Rwys  
REIL Rwy 17

TDZ/CL Rwys 12L, 12R, 30L, and 35

FAF to MAP 5.4 NM

Knots	60	90	120	150	180
Min:Sec	5:24	3:36	2:42	2:10	1:48

NC-1, 07 AUG 2025 to 04 SEP 2025

NC-1, 07 AUG 2025 to 04 SEP 2025