

(KBREW2.KBREW) 24137
KBREW TWO DEPARTURE

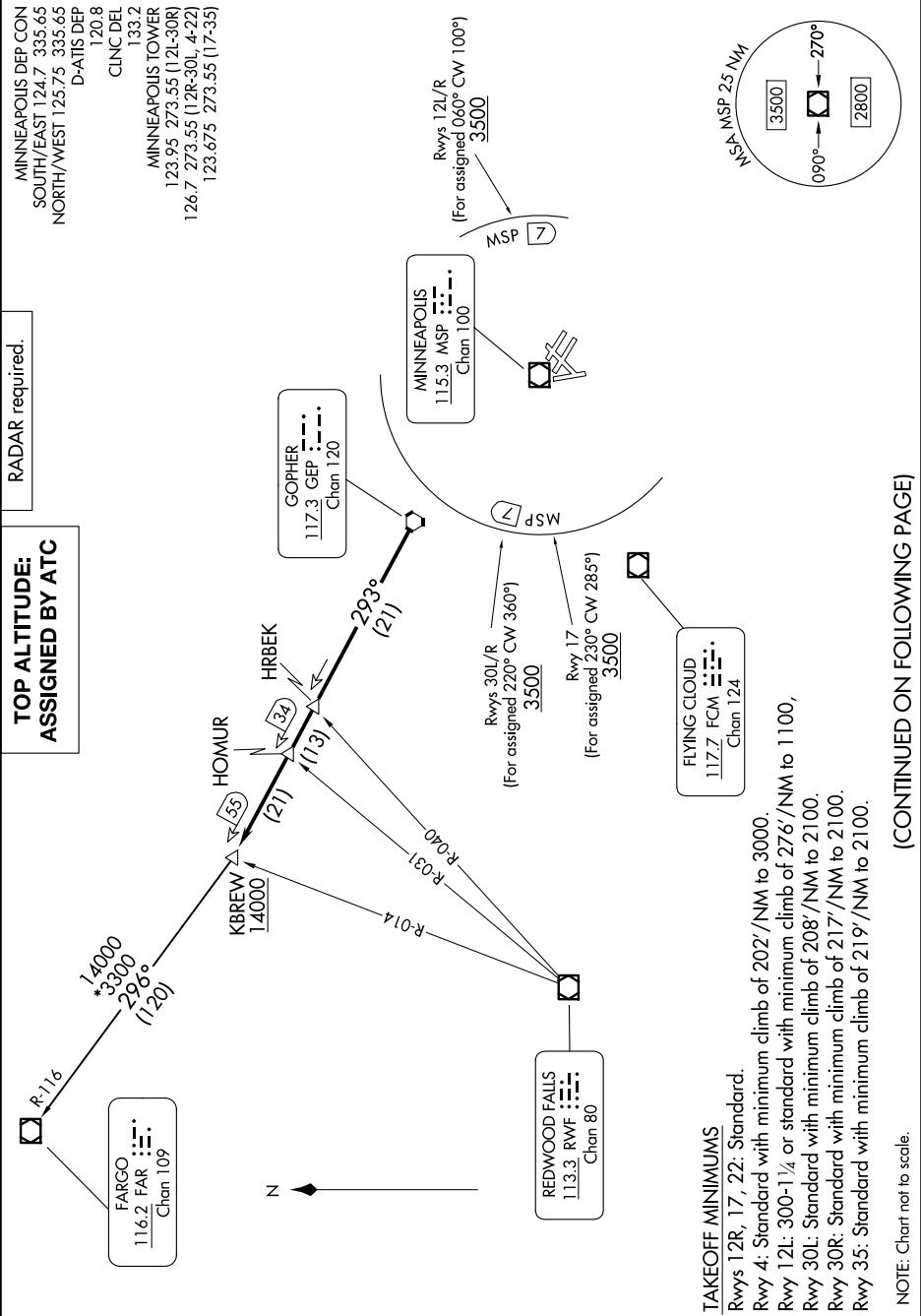
MINNEAPOLIS-ST PAUL INTL/WOLD-CHAMBERLAIN (MSP)
AL-264 (FAA) MINNEAPOLIS, MINNESOTA

NC-1, 07 AUG 2025 to 04 SEP 2025

MINNEAPOLIS DEP CON
SOUTH/EAST 124.7 335.65
NORTH/WEST 125.75 335.65
D-ATIS DEP
120.8
CUNC DEL
133.2
MINNEAPOLIS TOWER
123.95 273.55 (12L-30R)
126.7 273.55 (12R-30L, 4-22)
123.675 273.55 (17-35)

TOP ALTITUDE:
ASSIGNED BY ATC

RADAR required.



KBREW TWO DEPARTURE
(KBREW2.KBREW) 16MAY24

MINNEAPOLIS, MINNESOTA
MINNEAPOLIS-ST PAUL INTL/WOLD-CHAMBERLAIN (MSP)

TAKEOFF MINIMUMS
Rwys 12R, 17, 22: Standard.
Rwy 4: Standard with minimum climb of 202' /NM to 3000.
Rwy 12L: 300-1¼ or standard with minimum climb of 276' /NM to 1100,
Rwy 30L: Standard with minimum climb of 208' /NM to 2100.
Rwy 30R: Standard with minimum climb of 217' /NM to 2100.
Rwy 35: Standard with minimum climb of 219' /NM to 2100.

NOTE: Chart not to scale.

(CONTINUED ON FOLLOWING PAGE)

NC-1, 07 AUG 2025 to 04 SEP 2025