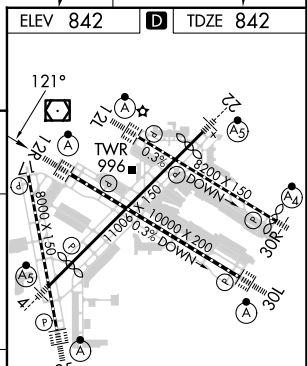
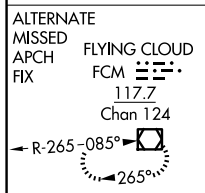


ILS or LOC RWY 12R  
MINNEAPOLIS-ST PAUL INTL/WOLD-CHAMBERLAIN (MSP)

**MISSED APPROACH:** Climb to 1300 then climbing right turn to 3000 direct FGT VORTAC and hold.

CPDLC

HIRL all Rwy's					
REIL Rwy 17					
TDZ/CL Rwy's 12L, 12R, 30L, and 35					
FAF to MAP 6.6 NM					
Knots	60	90	120	150	180
Min:Sec	6:36	4:24	3:18	2:38	2:12