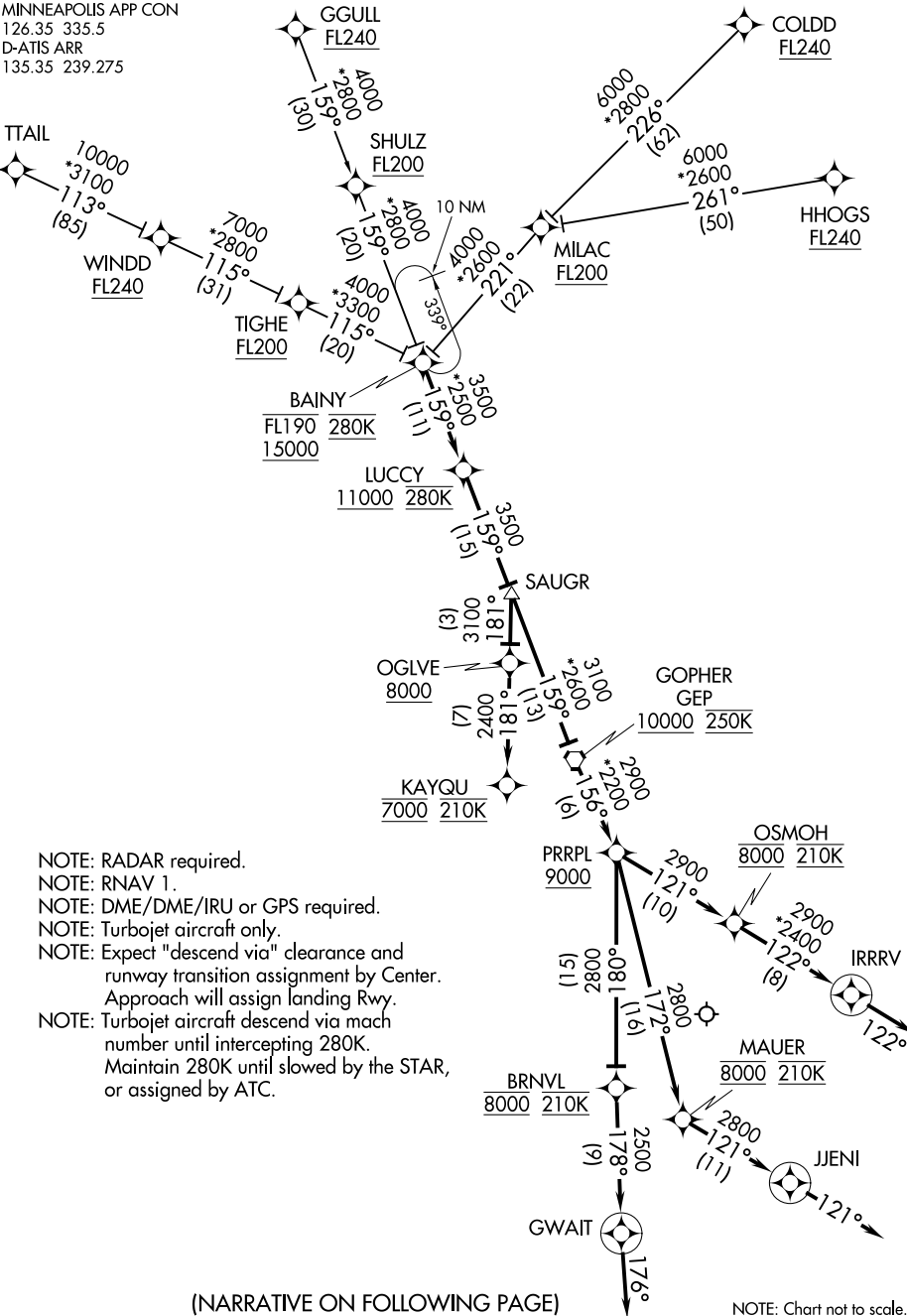


MINNEAPOLIS APP CON
126.35 335.5
D-ATIS ARR
135.35 239.275



- NOTE: RADAR required.
- NOTE: RNAV 1.
- NOTE: DME/DME/IRU or GPS required.
- NOTE: Turbojet aircraft only.
- NOTE: Expect "descend via" clearance and runway transition assignment by Center.
- NOTE: Approach will assign landing Rwy.
- NOTE: Turbojet aircraft descend via mach number until intercepting 280K.
- NOTE: Maintain 280K until slowed by the STAR, or assigned by ATC.

NC-1, 07 AUG 2025 to 04 SEP 2025

NC-1, 07 AUG 2025 to 04 SEP 2025