

ROCHESTER ONE DEPARTURE

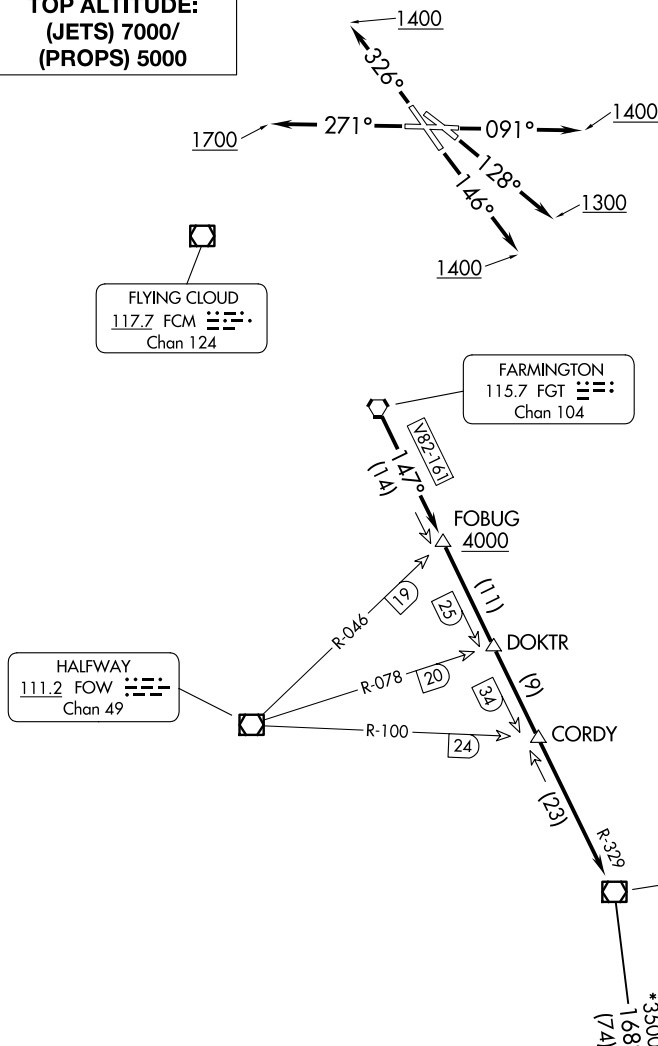
ST PAUL DOWNTOWN HOLMAN FLD (STP)

AL-263 (FAA)

ST. PAUL, MINNESOTA

TOP ALTITUDE:
(JETS) 7000/
(PROPS) 5000

MINNEAPOLIS DEP CON	
121.2	284.7
ATIS 118.35	
CLNC DEL	
121.675	
ST. PAUL TOWER ★	
119.1	257.8



NOTE: RADAR required.

TAKEOFF MINIMUMS

Rwy 9: Standard with minimum climb of 340' per NM to 1300.
Rwy 13: Standard with minimum climb of 235' per NM to 1500.
Rwy 14: Standard.
Rwy 27: 600-2 or standard with minimum climb of 442' per NM to 1500.
Rwy 31: NA - Obstacles.
Rwy 32: Standard with minimum climb of 340' per NM to 3000.

(CONTINUED ON FOLLOWING PAGE)

NOTE: Chart not to scale.

ROCHESTER ONE DEPARTURE

ST. PAUL, MINNESOTA
ST PAUL DOWNTOWN HOLMAN FLD (STP)

(RST1.RST) 13SEP18

NC-1, 07 AUG 2025 to 04 SEP 2025