



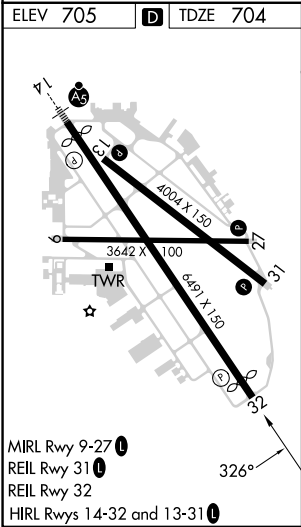
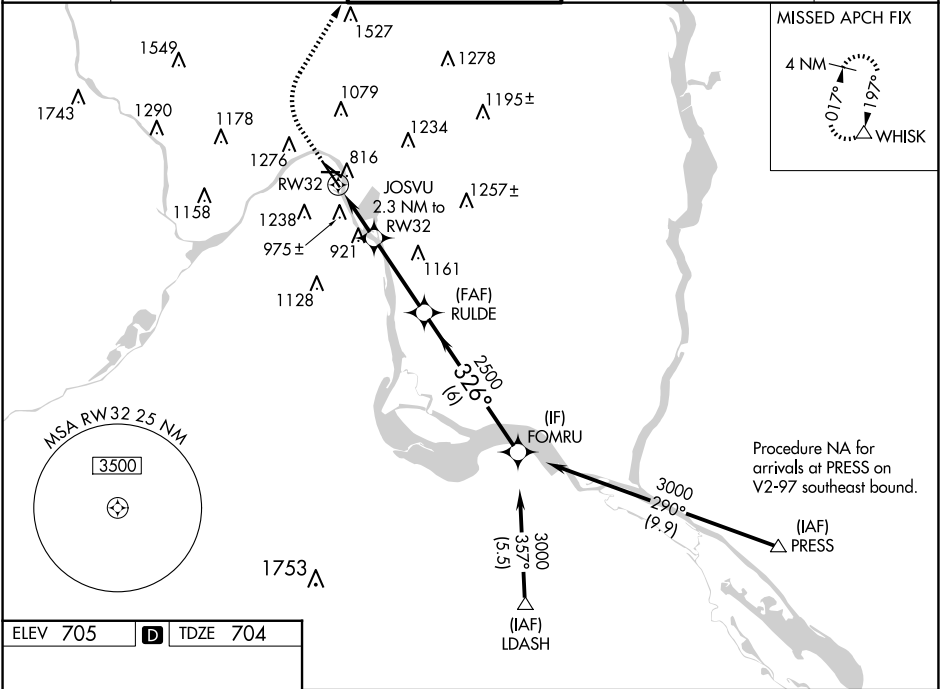
WAAS CH 50123 W32A	APP CRS 326°	Rwy ldg 6109 TDZE 704 Apt Elev 705
--	------------------------	---

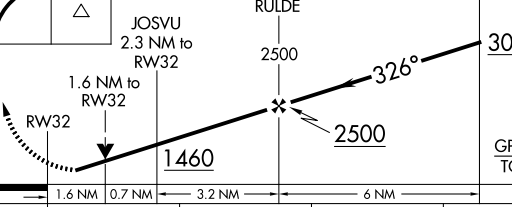
RNAV (GPS) RWY 32

ST PAUL DOWNTOWN HOLMAN FLD (STP)

RNP APCH - GPS.		MISSED APPROACH: Climb to 1400 then climbing right turn to 3000 direct WHISK and hold.
	Rwy 32 helicopter visibility reduction below ¾ SM NA.	
	For uncompensated Baro-VNAV systems, LNAV/VNAV NA below -21°C or above 54°C.	

ATIS 118.35	MINNEAPOLIS APP CON 121.2 335.65	ST. PAUL TOWER ★ 119.1(CTAF) 257.8	GND CON 121.675	CLNC DEL 121.675	UNICOM 122.95
-----------------------	--	--	---------------------------	----------------------------	-------------------------



1400		3000		WHISK					
CATEGORY		A		B		C		D	
LPV DA				1031/50		327 (400-1)			
LNAV/VNAV DA				1258-1½		554 (600-1½)			
LNAV MDA		1240/55		536 (600-1)		1240-1½		536 (600-1½)	
CIRCLING		1580-1¼		875 (900-1¼)		1580-2½ 875 (900-2½)		1580-2¾ 875 (900-2¾)	