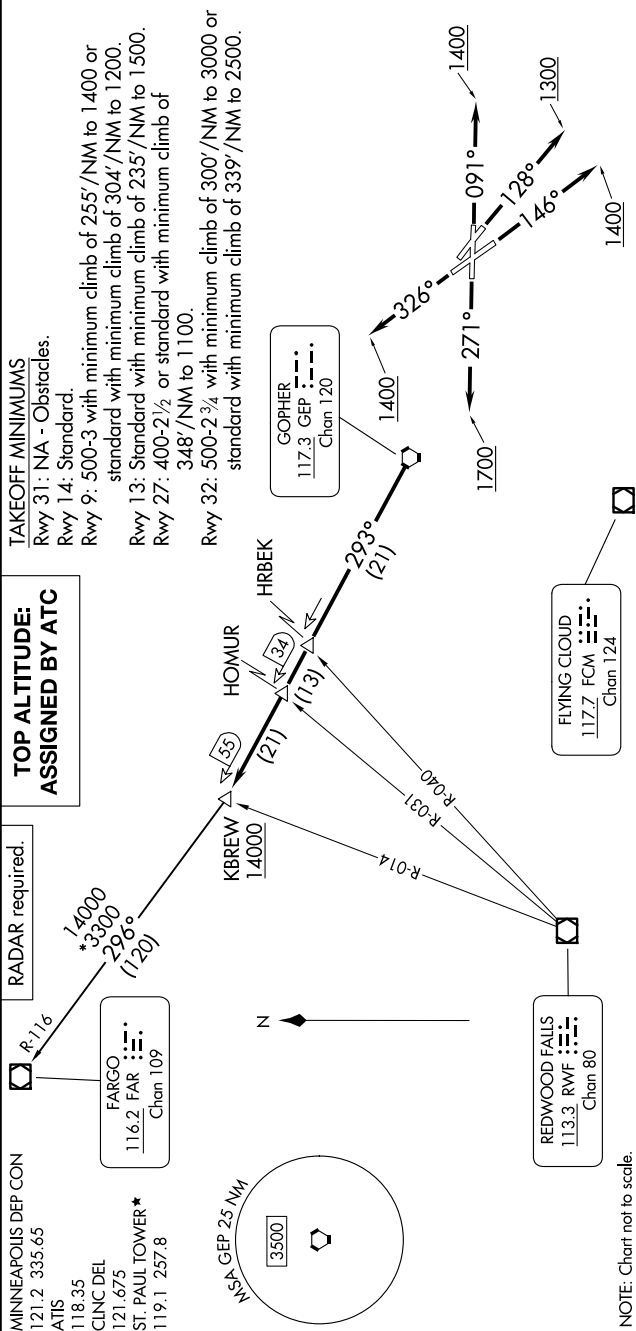


(KBREW2.KBREW) 24137
KBREW TWO DEPARTURE

AL-263 (FAA)
ST PAUL DOWNTOWN HOLMAN FLD (STP)
ST. PAUL, MINNESOTA



(KBREW2.KBREW) 16MAY24
KBREW TWO DEPARTURE

ST. PAUL, MINNESOTA
ST PAUL DOWNTOWN HOLMAN FLD (STP)

DEPARTURE ROUTE DESCRIPTION

TAKEOFF RUNWAY 9: Climb on heading 091° to 1400 for RADAR vectors to GEP VORTAC then on depicted route to KBREW, thence. . . .

TAKEOFF RUNWAY 13: Climb on heading 128° to 1300 for RADAR vectors to GEP VORTAC then on depicted route to KBREW, thence. . . .

TAKEOFF RUNWAY 14: Climb on heading 146° to 1400 for RADAR vectors to GEP VORTAC then on depicted route to KBREW, thence. . . .

TAKEOFF RUNWAY 27: Climb on heading 271° to 1700 for RADAR vectors to GEP VORTAC then on depicted route to KBREW, thence. . . .

TAKEOFF RUNWAY 32: Climb on heading 326° to 1400 for RADAR vectors to GEP VORTAC then on depicted route to KBREW, thence. . . .

. . . on transition. Maintain ATC assigned altitude. Expect filed altitude 10 minutes after departure.

FARGO TRANSITION (KBREW2.FAR): From over KBREW on FAR R-116 to FAR VOR/DME.