

COULT SEVEN DEPARTURE

ST PAUL DOWNTOWN HOLMAN FLD (STP)

AL-263 (FAA)

ST. PAUL, MINNESOTA

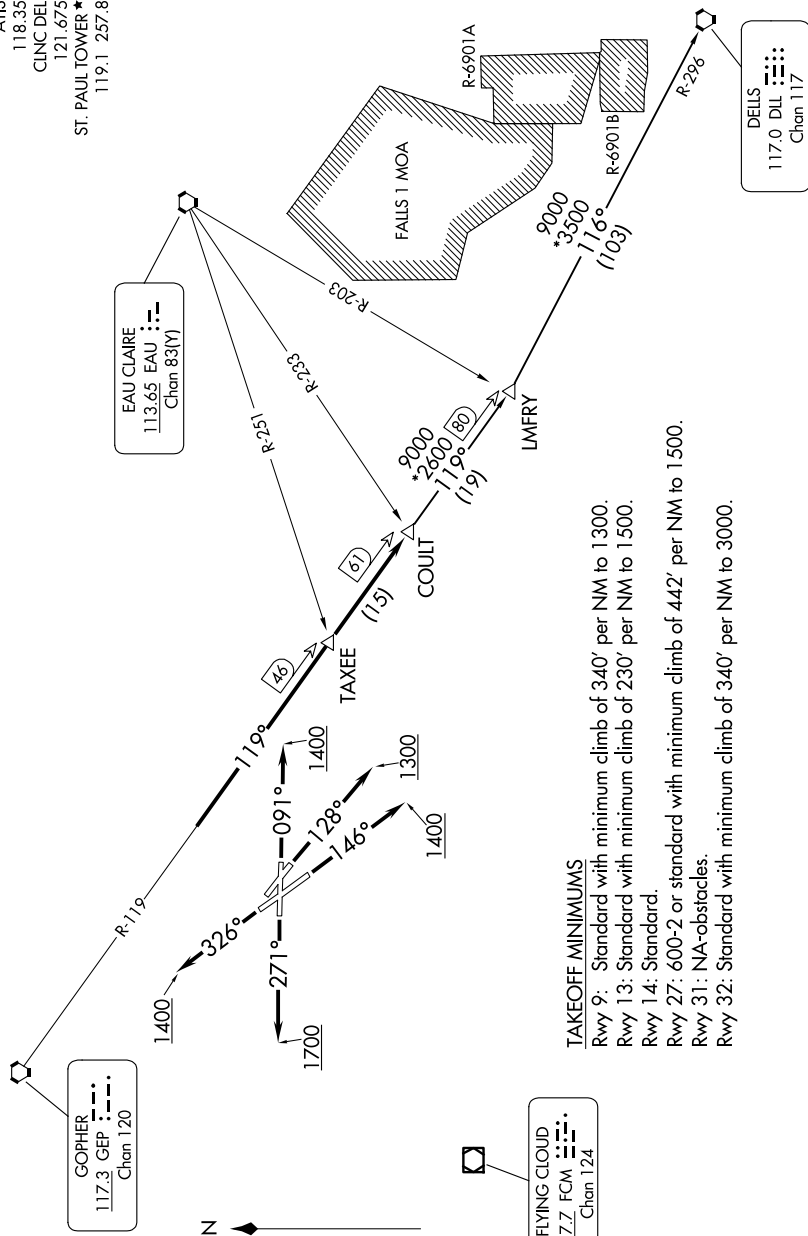
MINNEAPOLIS DEP CON
121.2 335.65
ATIS
118.35
CLNC DEL
121.675
ST. PAUL TOWER ★
119.1 257.8

EAU CLAIRE
113.65 EAU :-
Chan 83(Y)

GOPHER
117.3 GE_P : ---.
Chan 120

FLYING CLOUD
117.7 FCM   
Chan 124

DELLS
117.0 DLL
Chan 117



TAKEOFF MINIMUMS

Rwy 9: Standard with minimum climb of 340' per NM to 1300.

Rwy 13: Standard with minimum climb of 230' per NM to 1500.

Rwy 14: Standard.

Rwy 27: 600-2 or standard with minimum climb of 442' per NM to 1500.

Rwy 31: NA-obstacles.

Rwy 32: Standard with minimum climb of 340' per NM to 3000.

NOTE: RADAR required.

NOTE: Chart not to scale.

(CONTINUED ON FOLLOWING PAGE)

NC-1, 07 AUG 2025 to 04 SEP 2025

COULT SEVEN DEPARTURE

(COULT7.COULT) 29MAR18

ST. PAUL, MINNESOTA

ST PAUL DOWNTOWN HOLMAN FLD (STP)