

MILWAUKEE, WISCONSIN

AL-262 (FAA)

25163

WAAS CH 69226 W07A	APP CRS 076°	Rwy Ldg 8012 TDZE 729 Apt Elev 729
--	------------------------	---

RNAV (GPS) Z RWY 7R
GENERAL MITCHELL INTL (MKE)

T

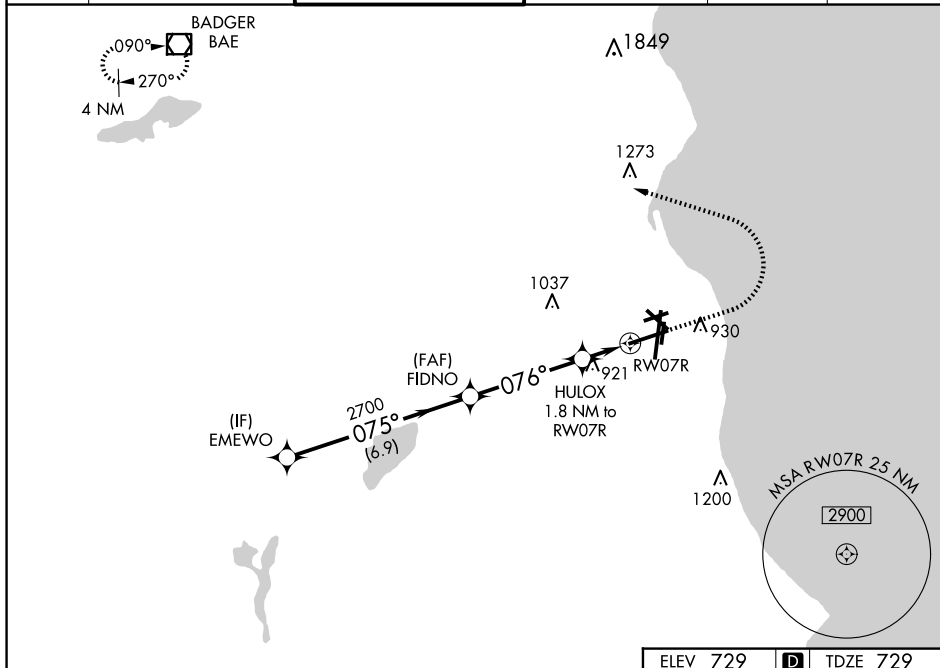
For uncompensated Baro-VNAV systems, LNAV/VNAV NA below -20°C (-4°F) or above 54°C (130°F). DME/DME RNP-0.3 NA.
RVR 1800 authorized with use of FD or AP or HUD to DA.

MALSR



MISSED APPROACH: Climb to 2900 then climbing left turn to 3000 direct BAE VOR/DME and hold.

D-ATIS 126.4	MILWAUKEE APP CON 126.5 307.0	MILWAUKEE TOWER 124.575 269.05	GND CON 121.8 263.125	CLNC DEL 120.8	CPDLC
------------------------	---	--	---------------------------------	--------------------------	-------



VGSI and RNAV glidepath not coincident
(VGSI Angle 3.00/TCH 63).

CATEGORY	A	B	C	D
LPV DA #	929/24		200 (200-½)	
LNAV/ VNAV DA	1232-1¼		503 (600-1¼)	
LNAV MDA	1180/24	451 (500-½)	1180/45	451 (500-¾)
C CIRCLING	1240-1	511 (600-1)	1240-1½ 511 (600-½)	1360-2 631 (700-2)

TDZ/CL Rwy 1L
REIL Rwys 1R, 7L,
13, 25R, 25L and 31
HIRL Rwys 1L-19R and 7R-25L
MIRL Rwys 1R-19L, 13-31 and 7L-25R

MILWAUKEE, WISCONSIN
Amdt 1F 26MAR20

42°57'N-87°54'W

GENERAL MITCHELL INTL (MKE)

RNAV (GPS) Z RWY 7R