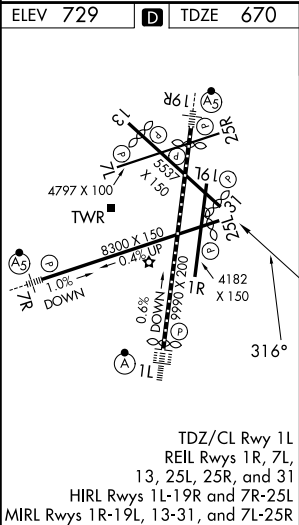
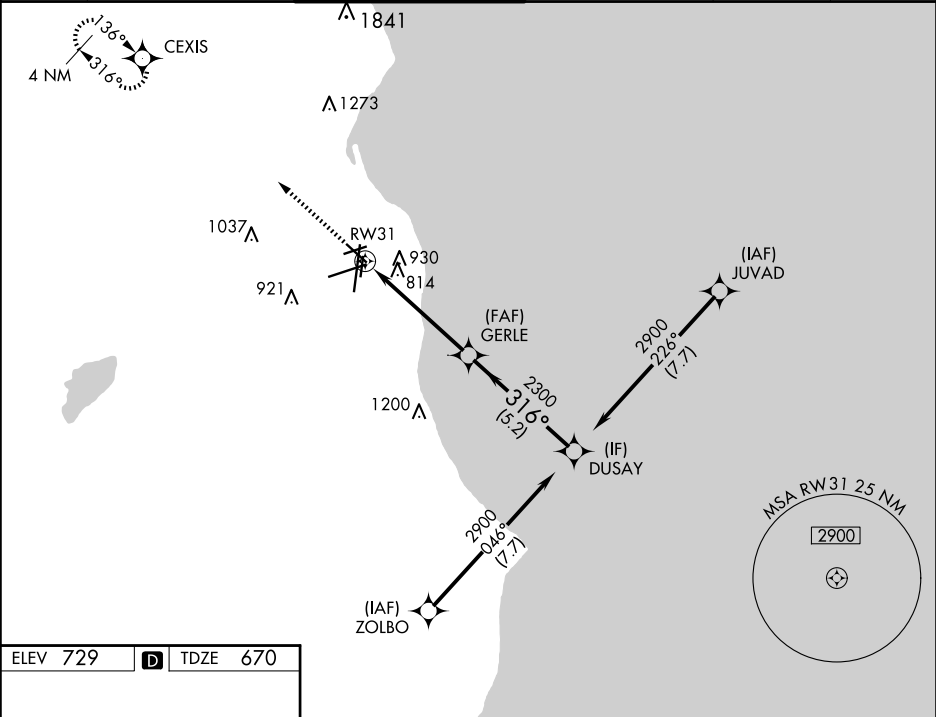




WAAS CH 48842 W31A	APP CRS 316°	Rwy Ldg TDZE 670 Apt Elev 729
--	------------------------	---

RNAV (GPS) RWY 31

GENERAL MITCHELL INTL (MKE)

RNP APCH.		MISSED APPROACH: Climb to 2900 direct CEXIS and hold.			
▼ Rwy 31 helicopter visibility reduction below ¾ SM NA. For uncompensated Baro-VNAV systems, LNAV/VNAV NA below -19°C or above 54°C.					
D-ATIS 126.4	MILWAUKEE APP CON 126.5 307.0	MILWAUKEE TOWER 124.575 269.05	GND CON 121.8 263.125	CLNC DEL 120.8	CPDLC



2900 ↑		CEXIS 				DUSAY	
*LNAV only		*1.1 NM to RW31		GERLE 2300		2900	
		RW31		316°		GP 3.00° TCH 55	
1.1		3.9 NM		5.2 NM			
CATEGORY	A	B	C	D			
LPV DA	948-1		278 (300-1)				
LNAV/ VNAV DA	1092-1¼		422 (400-1¼)				
LNAV MDA	1080-1	410 (400-1)	1080-1⅛	410 (400-1⅛)			
C CIRCLING	1240-1	511 (600-1)	1240-1½ 511 (600-1½)	1360-2 631 (700-2)			

EC-3, 07 AUG 2025 to 04 SEP 2025

EC-3, 07 AUG 2025 to 04 SEP 2025