

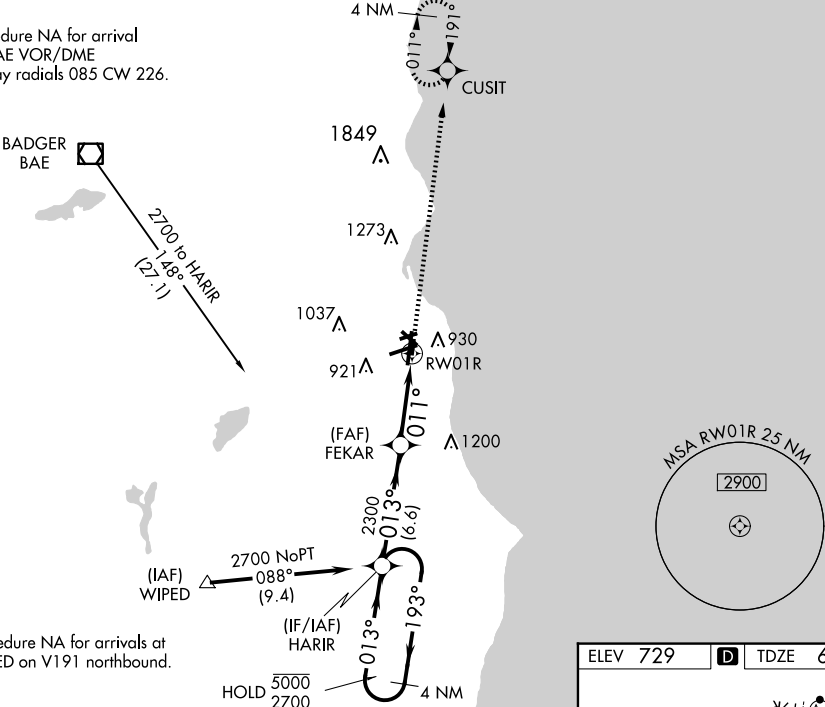
WAAS CH 97442 W01B	APP CRS 011°	Rwy Ldg TDZE Apt Elev	4182 678 729
--	------------------------	-----------------------------	---

RNAV (GPS) RWY 1R

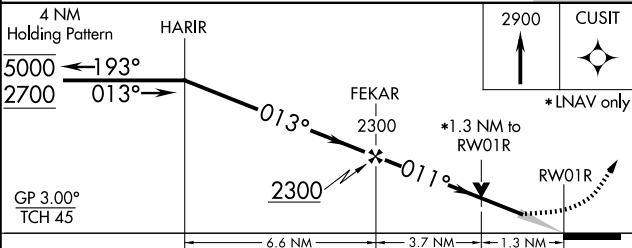
GENERAL MITCHELL INTL (MKE)

RNP APCH.		MISSED APPROACH: Climb to 2900 direct CUSIT and hold.		
For uncompensated Baro-VNAV systems, LNAV/VNAV NA below -20°C or above 54°C.				
D-ATIS 126.4	MILWAUKEE APP CON 126.5 307.0	MILWAUKEE TOWER 124.575 269.05	GND CON 121.8 263.125	CLNC DEL 120.8
		CPDLC		

Procedure NA for arrival
on BAE VOR/DME
airway radials 085 CW 226.



Procedure NA for arrivals at
WIPEO on V191 northbound.



CATEGORY	A	B	C	D
LPV DA	928-1		250 (200-1)	
LNAV/VNAV DA	1078-1½		400 (400-1½)	
LNAV MDA	1140-1	462 (500-1)	1140-1¾	462 (500-1¾)
CIRCLING	1240-1	511 (600-1)	1240-1½	1360-2
			511 (600-1½)	631 (700-2)

