

WAAS  
CH **45742**  
**W01A**

APP CRS  
**011°**

Rwy Ldg  
TDZE  
Apt Elev

**9080**  
**704**  
**728**

**RNAV (GPS) RWY 1L**  
GENERAL MITCHELL INTL (MKE)

RNP APCH - GPS

▼

For uncompensated Baro-VNAV systems, LNAV/VNAV NA below -19°C or above 54°C. For inop ALS increase LNAV/VNAV all Cts visibility to RVR 6000, increase LNAV Cat C/D visibility to RVR 6000.

ALSF-2

MISSED APPROACH: Climb to 1130 then climbing left turn to 2900 direct BAE VOR/DME and hold.

D-ATIS  
**126.4**

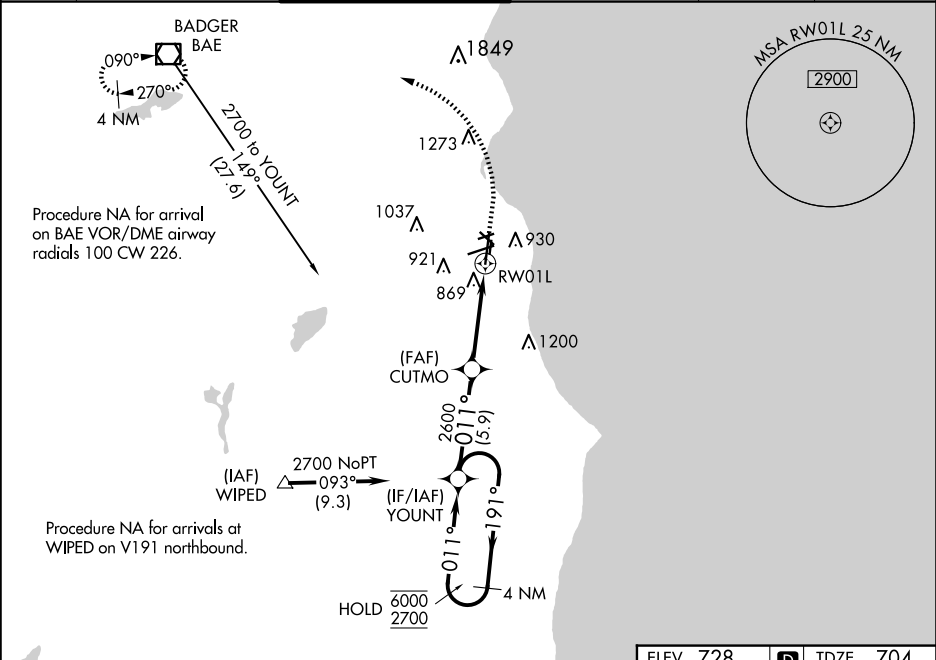
MILWAUKEE APP CON  
**126.5 307.0**

MILWAUKEE TOWER  
**124.575 269.05**

GND CON  
**121.8 263.125**

CLNC DEL  
**120.8**

CPDLC



VGSI and RNAV glidepath not coincident (VGSI Angle 3.00/TCH 72).				
4 NM Holding Pattern YOUNT				
<div>6000 ← 191° 2700 ← 011°</div> <div>GP 3.00° TCH 56</div> <div>2600</div> <div>CUTMO</div> <div>2600</div> <div>1.1 NM to RW01L</div> <div>RW01L</div> <div>5.9 NM</div> <div>4.7 NM</div> <div>1.1 NM</div>				
CATEGORY	A	B	C	D
LPV DA	904/18		200 (200-½)	
LNAV/VNAV DA	1120/40		416 (400-¾)	
LNAV MDA	1120/24	416 (400-½)	1120/40	416 (400-¾)
CIRCLING	1240-1	512 (600-1)	1240-1½ 512 (600-1½)	1360-2 632 (700-2)

