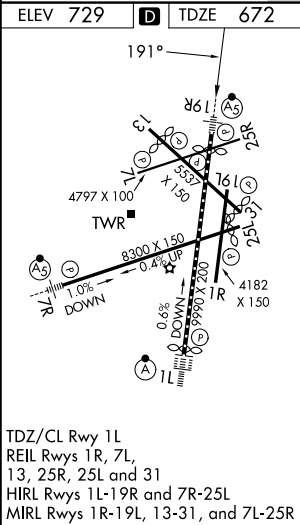
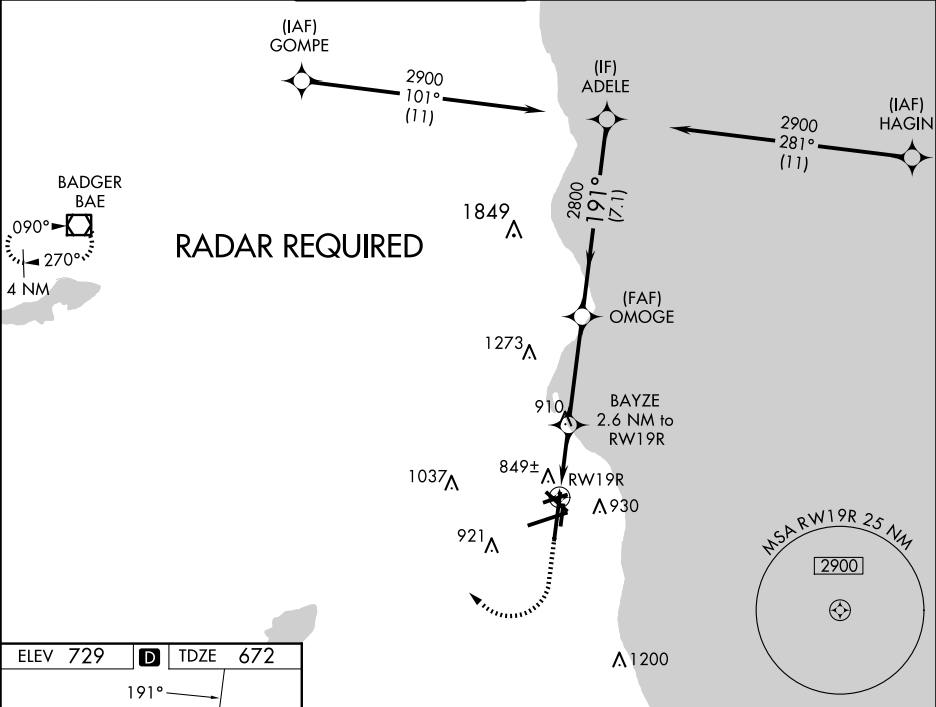


WAAS CH 99322 W19A	APP CRS 191°	Rwy Ldg TDZE 672 Apt Elev 729
--	------------------------	---

RNAV (GPS) RWY 19R

GENERAL MITCHELL INTL (MKE)

<div><div>⚠</div><div>For uncompensated Baro-VNAV systems, LNAV/VNAV NA below -22°C (-7°F) or above 39°C (102°F). DME/DME RNP-0.3 NA. For inop MALSR, increase LNAV/VNAV all Cats visibility to 1½ mile. ** RVR 1800 authorized with use of FD or AP or HUD to DA.</div></div>			<div>MALSR<div><div>AS</div><div></div></div></div>	MISSED APPROACH: Climb to 2000 then climbing right turn to 2800 direct BAE VOR/DME and hold.	
D-ATIS 126.4	MILWAUKEE APP CON 126.5 307.0	MILWAUKEE TOWER 124.575 269.05	GND CON 121.8 263.125	CLNC DEL 120.8	CPDLC



2000

2800

BAE

VGSI and RNAV glidepath not coincident (VGSI Angle 3.00/TCH 75).

BAYZE

2.6 NM to RWY 19R

ADELE

2900

*LNAV only

RWY 19R

1.1 NM to RWY 19R

OMOG

2800

191°

2800

GP 3.00°

TCH 54

1.1 NM

1.5 NM

3.9 NM

7.1 NM

*1540

CATEGORY

A

B

C

D

LPV DA **

872/24

200 (200-½)

LNAV/VNAV DA

1031/40

359 (400-¾)

LNAV MDA

1100/24

428 (400-½)

1100/40

428 (400-¾)

CIRCLING

1240-1

511 (600-1)

1240-1½

511 (600-1½)

1360-2

631 (700-2)