

LOC/DME I-GMF <b>111.5</b> Chan <b>52</b>	APP CRS <b>076°</b>	Rwy Ldg <b>8012</b> TDZE <b>729</b> Apt Elev <b>729</b>
---	------------------------	---

ILS or LOC RWY 7R

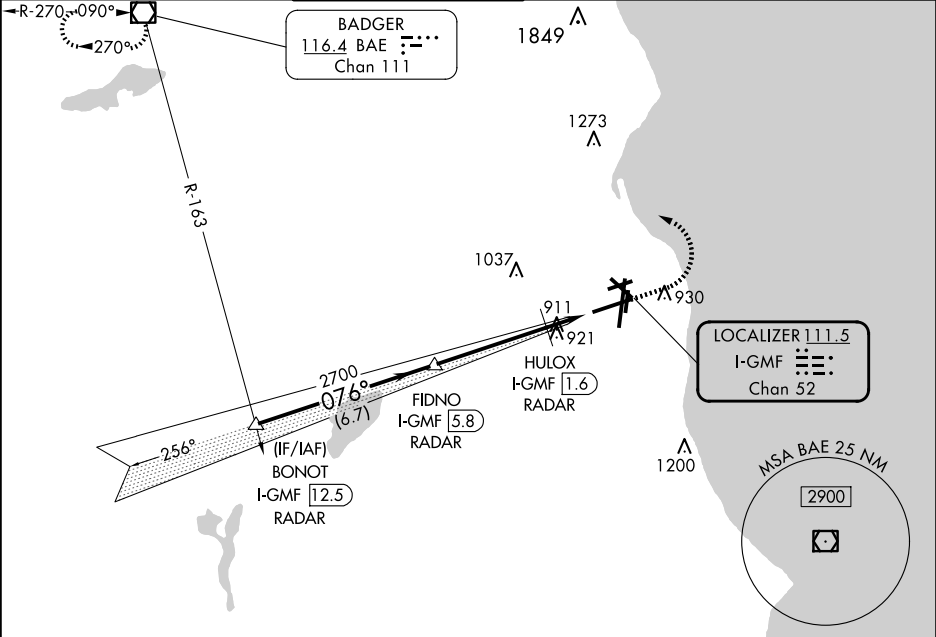
GENERAL MITCHELL INTL (MKE)

RADAR required for procedure entry. DME or RADAR required.

MALSR  


MISSED APPROACH: Climb to 2900 then left turn direct BAE VOR/DME and hold.

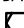
D-ATIS <b>126.4</b>	MILWAUKEE APP CON <b>126.5 307.0</b>	MILWAUKEE TOWER <b>124.575 269.05</b>	GND CON <b>121.8 263.125</b>	CLNC DEL <b>120.8</b>	CPDLC
------------------------	---	--	---------------------------------	--------------------------	-------



BONOT I-GMF 12.5 RADAR

VGSI and ILS glidepath not coincident (VGSI Angle 3.00/TCH 63).

2900

BAE 

2700

FIDNO I-GMF 5.8 RADAR

HULOX I-GMF 1.6 RADAR

I-GMF DME ANTENNA

\* I-GMF 1

\* LOC only.

2900

076°

2700

\*1280

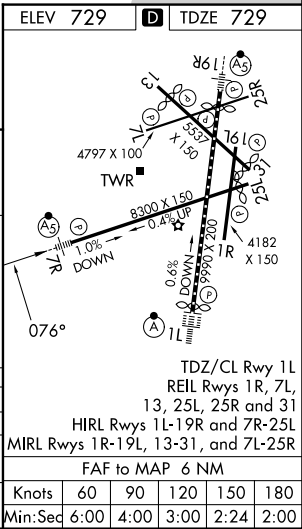
6.7 NM

4.2 NM

0.6 NM

1.2

CATEGORY	A	B	C	D
S-ILS 7R #	929/24 200 (200-½)			
S-LOC 7R	1180/24	451 (500-½)	1180/45	451 (500-¾)
CIRCLING	1240-1	511 (600-1)	1240-1½ 511 (600-½)	1360-2 631 (700-2)



EC-3, 07 AUG 2025 to 04 SEP 2025

EC-3, 07 AUG 2025 to 04 SEP 2025