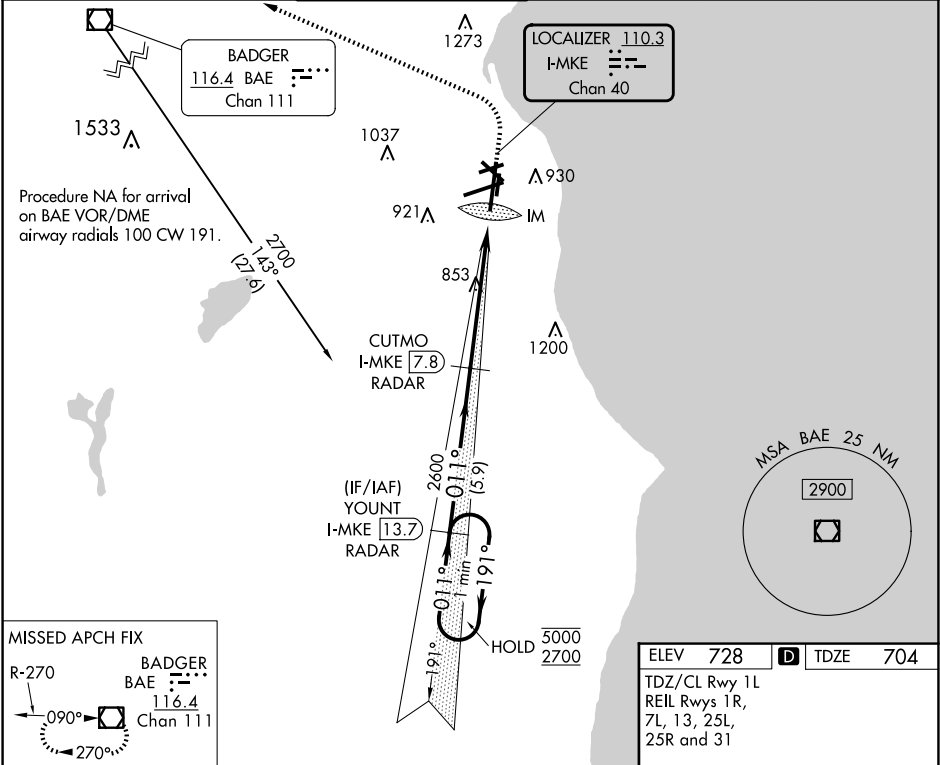


LOC/DME I-MKE 110.3 Chan 40	APP CRS 011°	Rwy Ldg TDZE 704 Apt Elev 728
---	------------------------	---

ILS RWY 1L (CAT II & III)

GENERAL MITCHELL INTL (MKE)

DME or RADAR required.		ALSIF-2	MISSED APPROACH: Climb to 1200 then climbing left turn to 2900 direct BAE VOR/DME and hold.		
D-ATIS 126.4	MILWAUKEE APP CON 126.5 307.0	MILWAUKEE TOWER 124.575 269.05	GND CON 121.8 263.125	CLNC DEL 120.8	CPDLC



VGSI and ILS glidepath not coincident (VGSI Angle 3.00/TCH 72).				1200	2900	BAE
One Minute Holding Pattern				YOUNT I-MKE 13.7 RADAR	CUTMO I-MKE 7.8 RADAR	
5000	←191°	011°→	011°	2600	IM 819	
2700			2600			
GS 3.00° TCH 56				5.9 NM	5.8 NM	1251'
CATEGORY	A	B	C	D		
S-ILS 1L	CAT II		RA 98/12	100 DA 804		
S-ILS 1L	CAT III		RVR 06			
CATEGORY II & III ILS - SPECIAL AIRCREW & AIRCRAFT CERTIFICATION REQUIRED						

