

WAAS CH <b>78328</b> <b>W11A</b>	APP CRS <b>107°</b>	Rwy Idg TDZE Apt Elev <b>408</b>
--	------------------------	--

RNAV (GPS) RWY 11

MILLINOCKET MUNI (MLT')

RNP APCH.

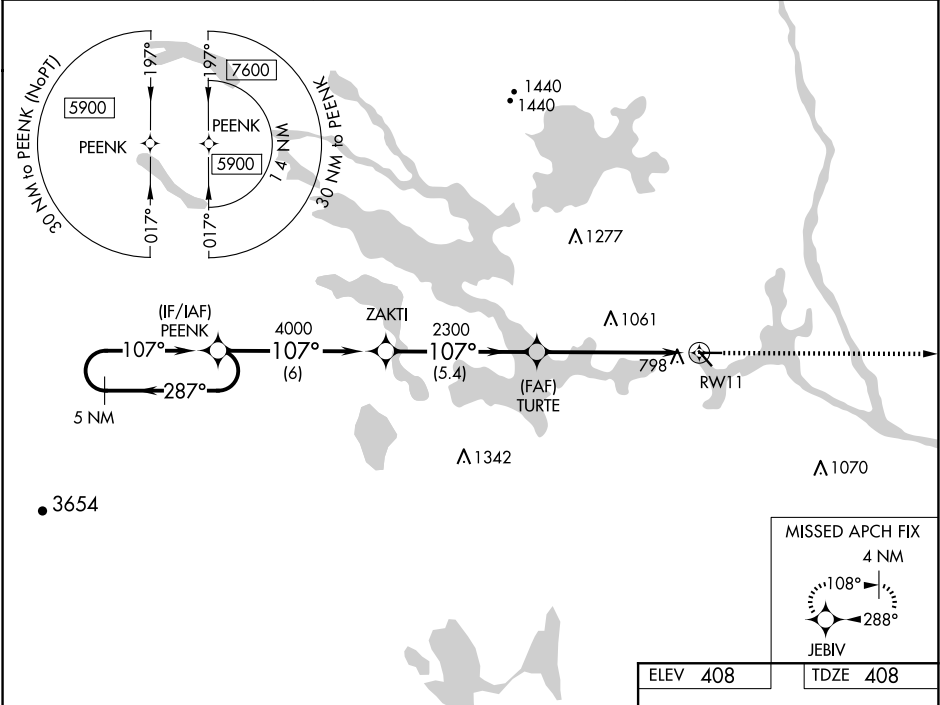
▼

▲

Baro-VNAV NA when using Houlton altimeter setting. For uncompensated Baro-VNAV systems, LNAV/VNAV NA below -15°C or above 41°C. Rwy 11 helicopter visibility reduction below 1 SM NA. When local altimeter setting not received, use Houlton altimeter setting and increase all DA and MDA 120 feet; increase LPV and LNAV/VNAV visibility all Cats ½ SM and LNAV visibility Cat B ¾ SM and Cat C/D ½ SM. Procedure NA at night.

MISSED APPROACH:  
Climb to 2300 direct JEBIV and hold.

ASOS <b>135.225</b>	BOSTON CENTER <b>120.25 346.4</b>	UNICOM <b>122.8 (CTAF)</b> ①
------------------------	--------------------------------------	---------------------------------



5 NM Holding Pattern		PEENK		ZAKTI		TURTE		RWY 11	
5900		4000		2300		2300		4713 X 99	
GP 3.00° TCH 51		107°		107°		107°		4000 X 100	
6 NM		5.4 NM		5.8 NM		0.3% UP			
CATEGORY		A		B		C		D	
LPV DA		929-1 3/4		521 (600-1 3/4)					
LNAV/ VNAV DA		1004-2		596 (600-2)					
LNAV MDA		1100-1 692 (700-1)		1100-2 692 (700-2)					
								REIL Rwy 29 ① MIRL Rwy 11-29 ①	