

VORTAC MLF 112.1 Chan 58	APP CRS 344°	Rwy Ldg N/A TDZE N/A Apt Elev 5042
--	------------------------	---

VOR/DME-A

MILFORD MUNI/BEN AND JUDY BRISCOE FLD (MLF)

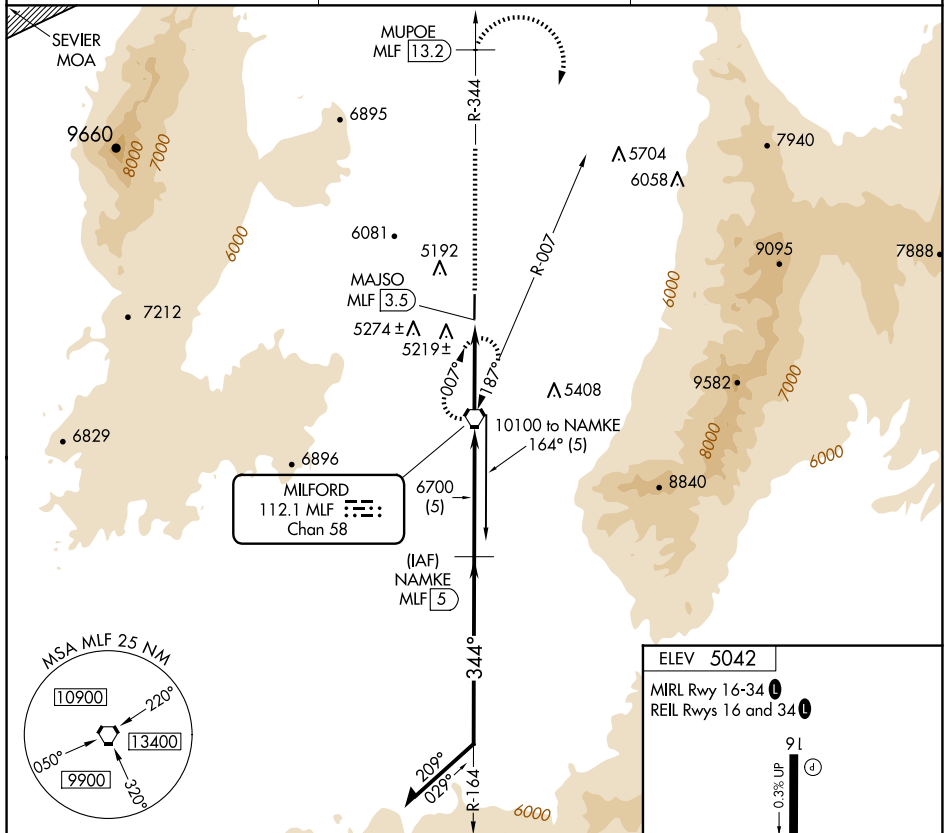
T When local altimeter setting not received, use Cedar City altimeter setting and increase all MDAs 180 feet, Circling Cat D NA. When VGSI inop, procedure NA at night. Visibility reduction by helicopters NA.

A

❄️ -27°C

MISSED APPROACH: Climb on MLF VORTAC R-344 to MUPOE/MLF 13.2 DME then climbing right turn to 9600 on heading 150° and MLF VORTAC R-007 to MILFORD VORTAC and hold.

ASOS 135.025	SALT LAKE CENTER 125.575 379.275	UNICOM 122.8 (CTAF) L
------------------------	--	---------------------------------



Remain within 10 NM		NAMKE MLF 5		↑ MLF R-344	MUPOE MLF 13.2	9600 hdg 150°	MLF R-007	MLF
9100 164° 344° 8100		10100 6700		MLF VORTAC 4.28 NM TCH 42		MAJSO MLF 3.5		
		5 NM		3.5 NM				
CATEGORY	A		B	C		D		
CIRCLING	5660-1 618 (700-1)			6300-3 1258 (1300-3)		6540-3 1498 (1500-3)		

