

MILES CITY, MONTANA

AL-259 (FAA)

22195

WAAS CH 56240 W31A	APP CRS 306°	Rwy Idg 5624 TDZE 2627 Apt Elev 2634
--	------------------------	---

RNAV (GPS) RWY 31
FRANK WILEY FLD (MLS)

FRANK WILEY FLD (MLS)

RNP APCH - GPS.

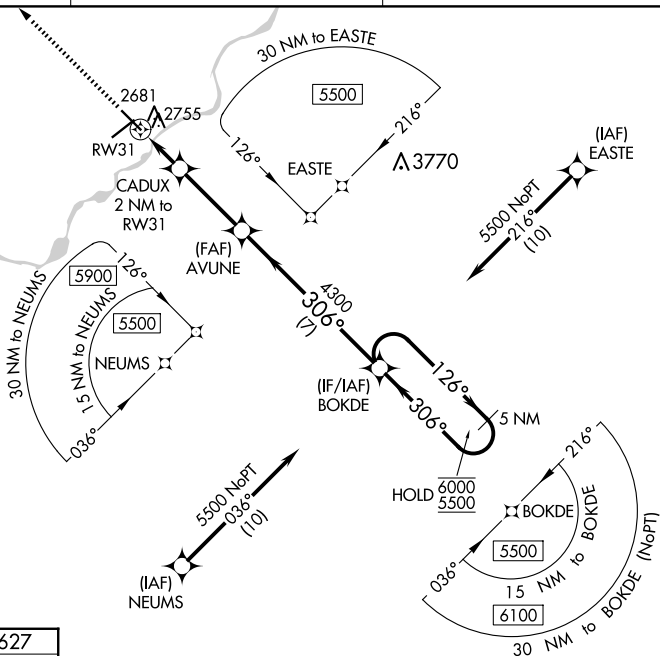


For uncompensated Baro-VNAV systems, LNAV/VNAV NA below -24°C or above 54°C.

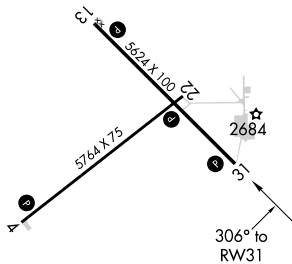
MISSED APPROACH: Climb to 6000 direct EGITE and hold, continue climb-in-hold to 6000.

ASOS 135.575	SALT LAKE CENTER 126.85 305.2	UNICOM 123.0 (CTAF) 0
------------------------	---	---------------------------------

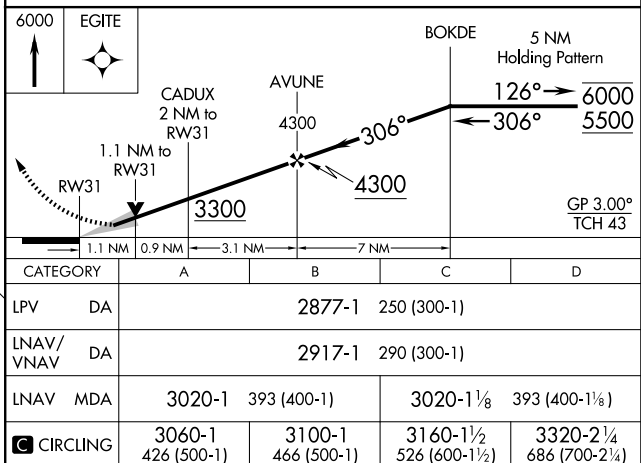
MISSED APCH FIX



ELEV 2634	D	TDZE 2627
-----------	----------	-----------

MIRL Rwy 4-22 and 13-31 **L**

REIL Rwy's 4, 13, 22 and 31 L



MILES CITY, MONTANA

Amdt 1 14JUL22

FRANK WILEY FLD (MLS)

46°26'N-105°53'W

RNAV (GPS) RWY 31

NW-1, 07 AUG 2025 to 04 SEP 2025