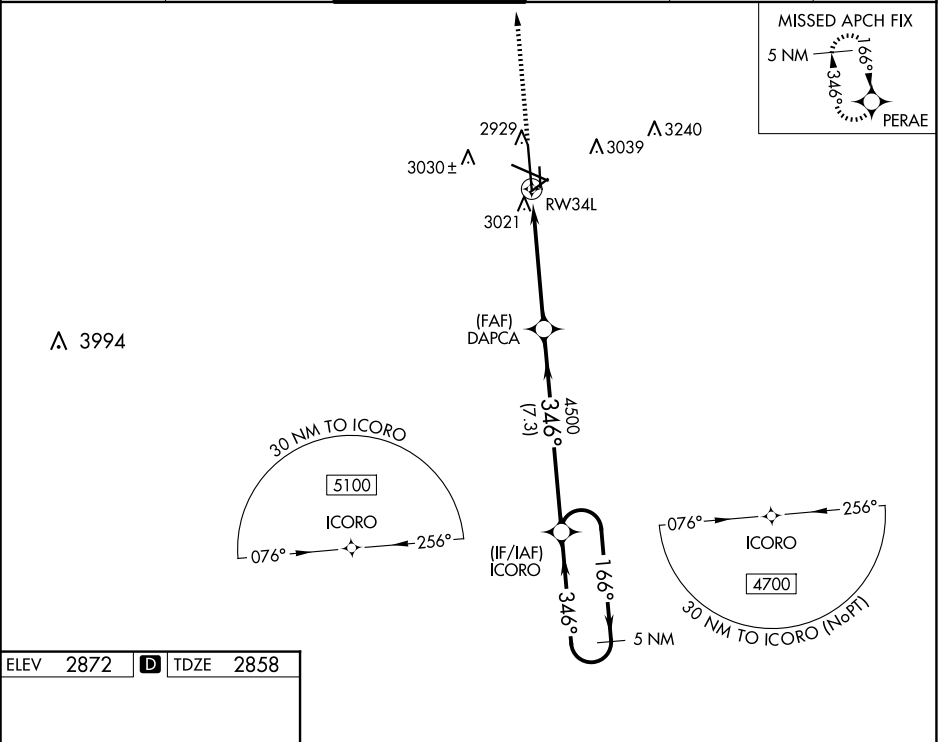


WAAS CH 66029 W34A	APP CRS 346°	Rwy Ldg TDZE Apt Elev	9501 2858 2872
--	------------------------	-----------------------------	---

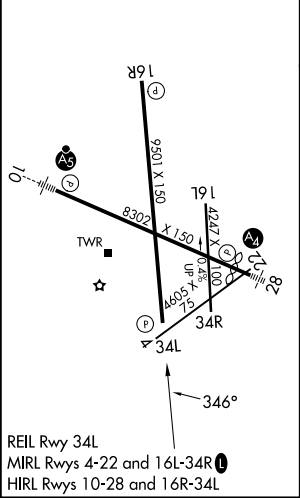
RNAV (GPS) RWY 34L
MIDLAND INTL AIR AND SPACE PORT (M.A.F.)

7 For uncompensated Baro-VNAV systems, LNAV/VNAV NA below -11°C (13°F) or above 26°C (78°F). Circling Rwy 16L NA at night. DME/DME RNP-0.3 NA.	MISSED APPROACH: Climb to 5100 direct PERAE and hold.
--	---

ATIS 126.8 235.975	MIDLAND APP CON★ 124.6 290.4	MIDLAND TOWER★ 118.7 (CTAF) 0 273.45	GND CON 121.9 348.6	CLNC DEL 118.05 317.65	UNICOM 122.95
------------------------------	--	--	-------------------------------	----------------------------------	-------------------------



ELEV 2872	D	TDZE 2858
-----------	----------	-----------



5100	PERAE	* LNAV only	ICORO	5 NM Holding Pattern
			DAPCA	4500
			RW34L	1.2
				3.8 NM
				7.3 NM
CATEGORY	A	B	C	D
LPV DA	3058-3/4	200 (200-3/4)		
LNAV/VNAV DA	3203-1 1/8	345 (400-1 1/8)		
LNAV MDA	3280-1	422 (500-1)	3280-1 1/4	422 (500-1 1/4)
CIRCLING	3440-1	568 (600-1)	3440-1 1/2	3520-2
			568 (600-1 1/2)	648 (700-2)