

MIDLAND, TEXAS

AL-258 (FAA)

25163

WAAS CH 61329 W16A	APP CRS 166°	Rwy Ldg 9501 TDZE 2872 Apt Elev 2872
--	------------------------	---

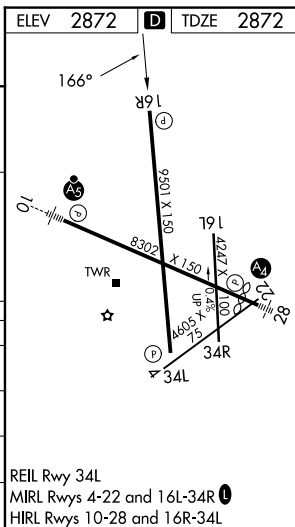
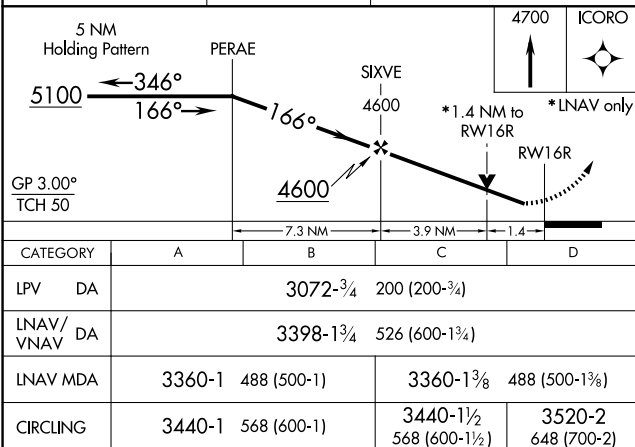
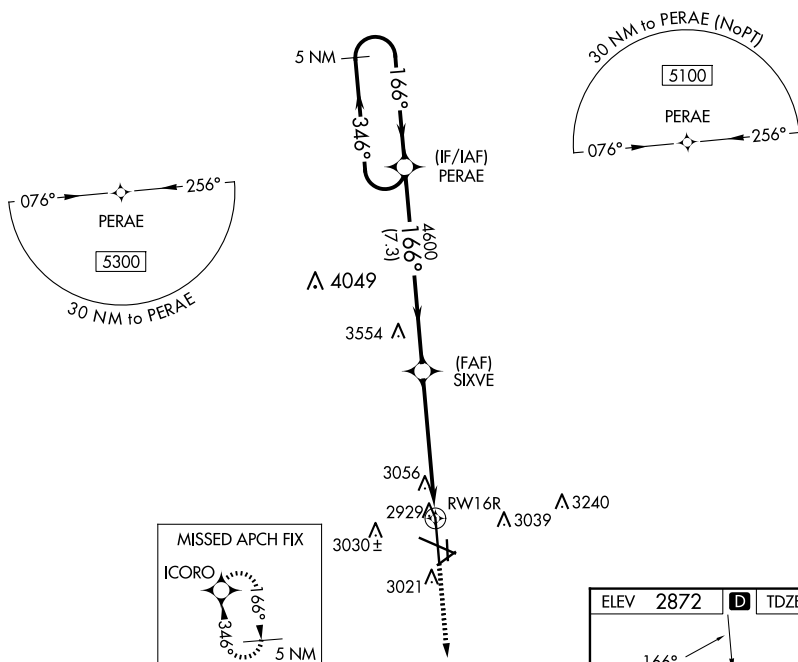
RNAV (GPS) RWY 16R

MIDLAND INTL AIR AND SPACE PORT (MAF)

T For uncompensated Baro-VNAV systems, LNAV/VNAV NA below -11°C (13°F) or above 25°C (77°F). Rwy 16R helicopter visibility reduction below ¾ SM NA. DME/DME RNP-0.3 NA. Circling Rwy 16L NA at night.

MISSED APPROACH: Climb to 4700 direct ICORO and hold.

ATIS	MIDLAND APP CON★	MIDLAND TOWER★	GND CON	CLNC DEL	UNICOM
126.8 235.975	124.6 290.4	118.7 (CTAF) 0273.45	121.9 348.6	118.05 317.65	122.95



MIDLAND, TEXAS
Amdt 1B 22JUN17

MIDLAND INTL AIR AND SPACE PORT (MAF)

31°57'N-102°12'W

RNAV (GPS) RWY 16R

SC-3, 07 AUG 2025 to 04 SEP 2025

SC-3, 07 AUG 2025 to 04 SEP 2025