

MIDLAND, TEXAS

HI-VOR or TACAN RWY 34L

VORTAC MAF 112.6 Chan 73	APCH CRS 357°	Rwy Idg 9501 TDZE 2858 Arpt Elev 2872
--	-------------------------	--

[USAF]

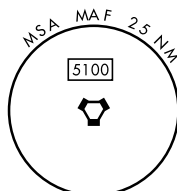
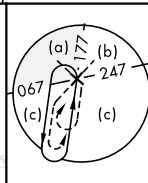
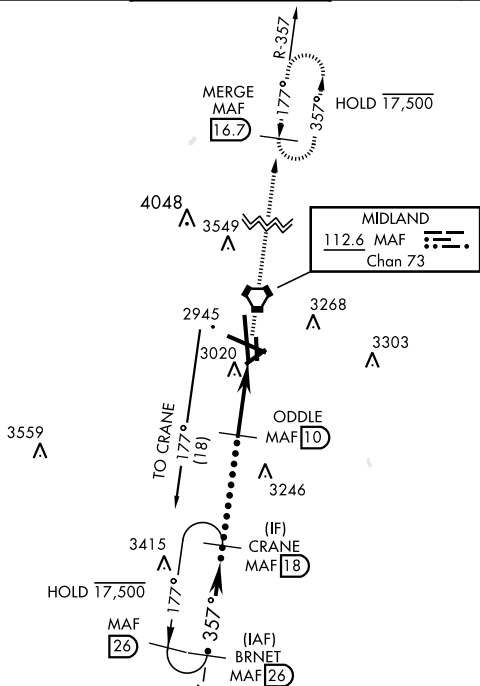
MIDLAND INTL AIR AND SPACE PORT (KMAF)

DME required

T * Circling Rwy 16L not authorized at night.

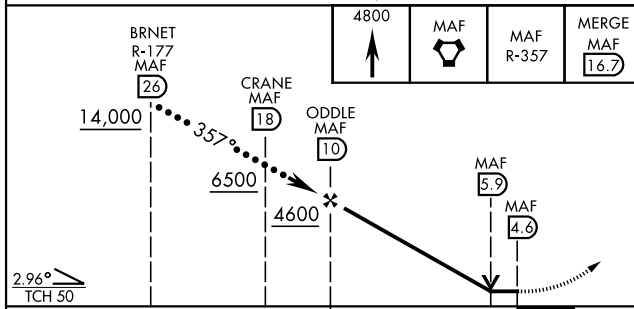
MISSED APPROACH: Climb to 4800 direct MAF VORTAC and on MAF VORTAC R-357 to MERGE/MAF 16.7 DME and hold.

ATIS ★	APP CON ★	TOWER ★	GND CON	CLNC DEL	UNICOM
126.8 235.975	124.6 290.4	118.7(CTAF) 0 273.45	121.9 348.6	118.05 317.65	122.95

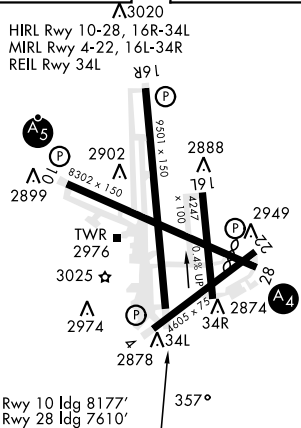


EMERG SAFE ALT 100 NM 7000

ELEV	2872	D	TDZE	2858
------	------	----------	------	------



CATEGORY	C	D	E
S-34L	3320-1 $\frac{3}{8}$	462	(500-1 $\frac{3}{8}$)
CIRCUING*	3440-1 $\frac{1}{2}$ 568 (600-1 $\frac{1}{2}$)	3520-2 648 (700-2)	3600-2 $\frac{1}{2}$ 728 (800-2 $\frac{1}{2}$)



MIDLAND, TEXAS

31° 57'N-102° 12'W

MIDLAND INTL AIR AND SPACE PORT (KMAF)

Amdt 3 20JUL17

HI-VOR or TACAN RWY 34L

SC-3, 07 AUG 2025 to 04 SEP 2025