

MIDLAND, TEXAS

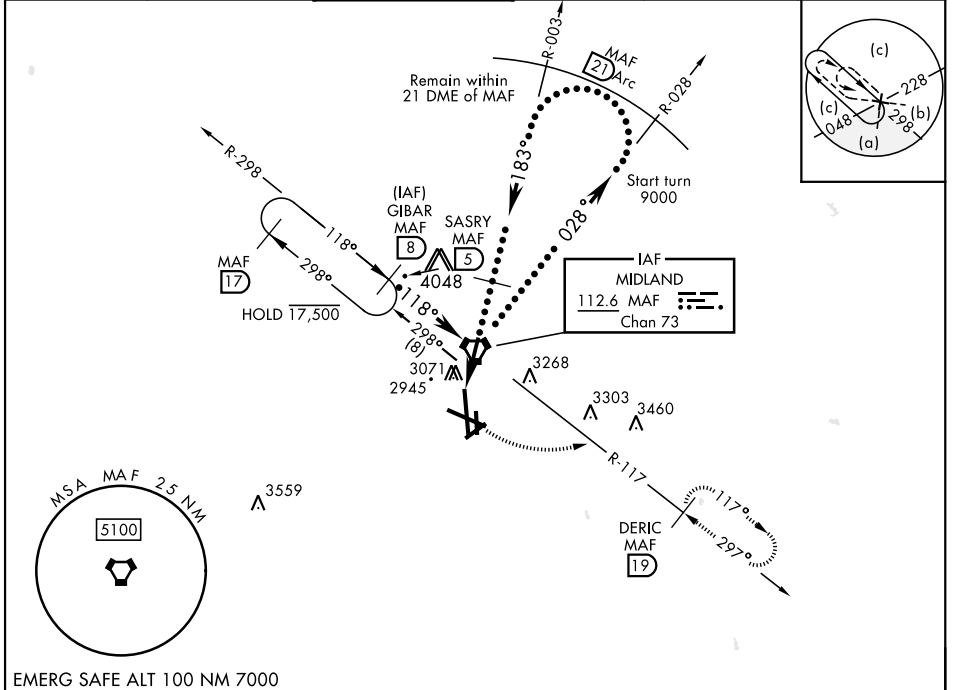
25107

# HI-VOR or TACAN RWY 16R

VORTAC MAF <b>112.6</b> Chan <b>73</b>	APCH CRS <b>183°</b>	Rwy ldg TDZE Arpt Elev <b>9501</b> <b>2872</b> <b>2872</b>	[USAF]	MIDLAND INTL AIR AND SPACE PORT (KMAF)
--	-------------------------	---	--------	--

DME required	MISSED APPROACH: Climb to 3500 then climbing left turn to 4800 on MAF VORTAC R-117 to DERIC/MAF 19 DME and hold.
* Circling Rwy 16L not authorized at night.	

ATIS ★ <b>126.8 235.975</b>	APP CON ★ <b>124.6 290.4</b>	TOWER ★ <b>118.7(CTAF) 273.45</b>	GND CON <b>121.9 348.6</b>	CLNC DEL <b>118.05 317.65</b>	UNICOM <b>122.95</b>
--------------------------------	---------------------------------	--------------------------------------	-------------------------------	----------------------------------	-------------------------



EMERG SAFE ALT 100 NM 7000		VGS and descent angles not coincident		ELEV 2872	TDZE 2872
GIBAR MAF 8		MAF VORTAC		DERIC MAF 19	
14,000		14,000		3020	
118°		028°		183°	
MAF 3.1		SASRY MAF 5		Start turn at 9000 remain within 21 DME	
MAF 1.3		4600		3.29° TCH 50	
3.1 NM		4000		3400-1½	
CATEGORY C		CATEGORY D		CATEGORY E	
S-16R		528		{600-1½}	
CIRCUING*		3440-1½		3600-2½	
568 (600-1½)		3520-2		728 (800-2½)	
648 (700-2)		648 (700-2)		728 (800-2½)	

MIDLAND, TEXAS 31° 57' N-102° 12' W MIDLAND INTL AIR AND SPACE PORT (KMAF)  
Amdt 3 20JUL17

# HI-VOR or TACAN RWY 16R