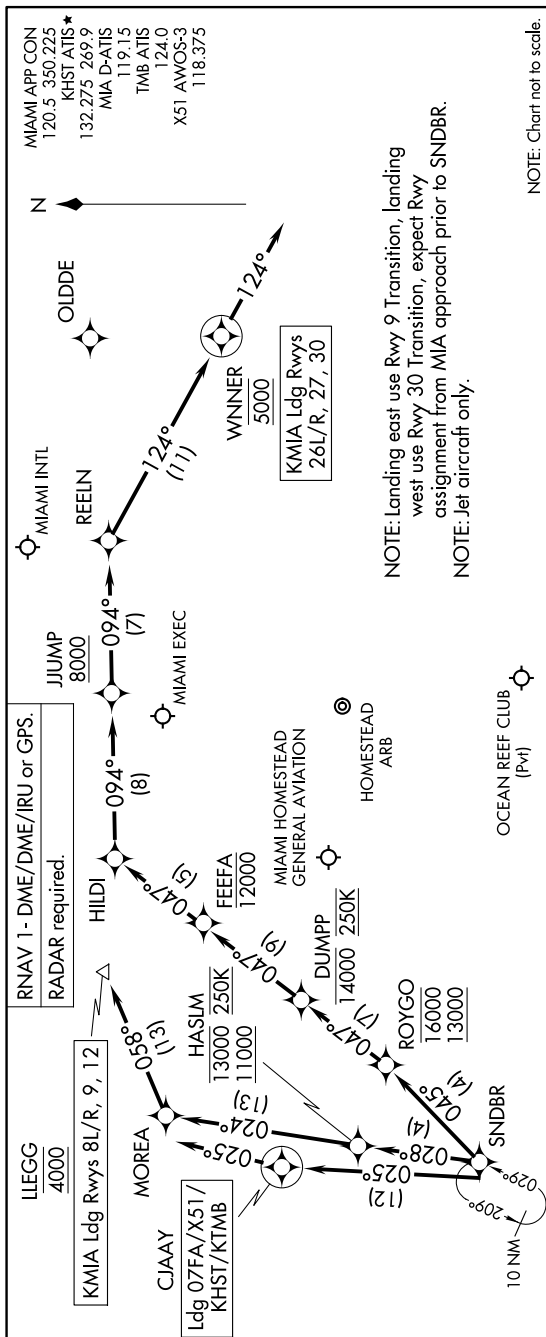


SNDBR THREE ARRIVAL (RNAV) Arrival Routes

MIAMI, FLORIDA

SE-3, 07 AUG 2025 to 04 SEP 2025



ARRIVAL ROUTE DESCRIPTION

on track 024° to MOREA, then on track 058° to cross ILEGG at 4000. Expect ILS or RNAV Rwy 9 approach or RADAR vectors to final approach course.

LANDING KMIA RUNWAYS 26L/R, 27, 30: From SNDBR on track 045° to cross ROYGO between 13000 and 16000, then on track 047° to cross DUMPP at or below 14000 and at 250K, then on track 047° to cross FEEFA at or below 12000, then on track 047° to cross HIILDI, then on track 094° to cross JIUMP at or above 8000, then on track 094° to REELIN, then on track 124° to cross WNNER at 5000, then on track 124°. Expect RADAR vectors to final approach course.

LANDING 07FA/X51 /KHST/KTMB: From SNDBR on track 025° to CJAAY, then on track 025°. Expect RADAR vectors to final approach course.

NOTE: Chart not to scale.

SE-3, 07 AUG 2025 to 04 SEP 2025

SNDBR THREE ARRIVAL (RNAV) Arrival Routes

(SNDBR.SNDBR3) 29DEC22

MIAMI, FLORIDA