

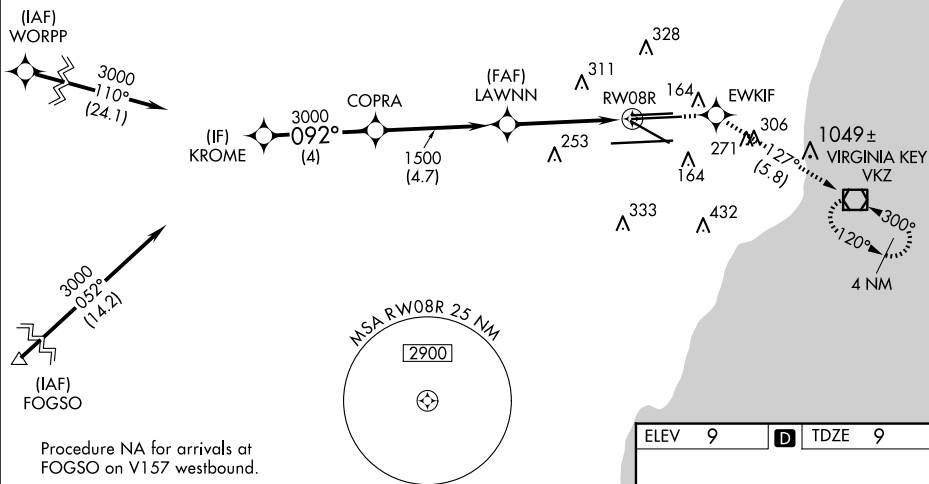


WAAS CH 97404 W08B	APP CRS 092°	Rwy Idg 10506 TDZE 9 Apt Elev 9
--	------------------------	--

RNAV (GPS) Z RWY 8R
MIAMI INTL (MIA)

RNP APCH-GPS.						<div>MALSR</div> <div></div>		MISSED APPROACH: Climb to 3000 direct EWKIF and on track 12° to VKZ VOR/DME and hold, continue climb in-hold to 3000.		
<div> Rwy 8R helicopter visibility reduction below RVR 4000 NA. For uncompensated Baro-VNAV systems, LNAV/VNAV NA below 8°C or above 54°C. For inop ALS, increase LPV alt Cats visibility to RVR 4500 and LNAV Cats A and B visibility to RVR 5500.</div>										
D-ATIS ARR DEP 119.15 133.675		MIAMI APP CON 124.85 322.3		MIAMI TOWER 118.3 256.9		GND CON 121.8 (8L/8R/12°/26L/26R) 127.5 (9/27/30)		348.6	CLNC DEL 135.35	CPDLC

Procedure NA for arrivals at WORPP
on V35 westbound and on V529 northwest bound.



VGSI and RNAV glidepath not coincident
(VGSI Angle 3.00/TCH 77).

CATEGORY	A	B	C	D
LPV DA	277/40 268 (300-¾)			
RNAV/ VNAV DA	531/55 522 (600-1)			
RNAV MDA	600/40 591 (600-¾)		600-1¼ 591 (600-1¼)	

