

WAAS
CH **40205**
W27A

APP CRS
272°

Rwy Idg **12755**
TDZE **9**
Apt Elev **9**

RNAV (GPS) Y RWY 27
MIAMI INTL (MIA)

RNP APCH-GPS

Simultaneous approach authorized. LNAV procedure NA during simultaneous operations. Use of FD or AP required during simultaneous operations.
For uncompensated Baro-VNAV systems, LNAV/VNAV NA below 8°C or above 54°C. *RVR 1800 authorized with use of FD or AP or HUD to DA.

MALSR

MISSED APPROACH: Climb to 800 then climbing right turn to 4000 direct BRBRA and hold, continue climb-in-hold to 4000.

D-ATIS
ARR **119.15**
DEP **133.675**

MIAMI APP CON
124.85 322.3

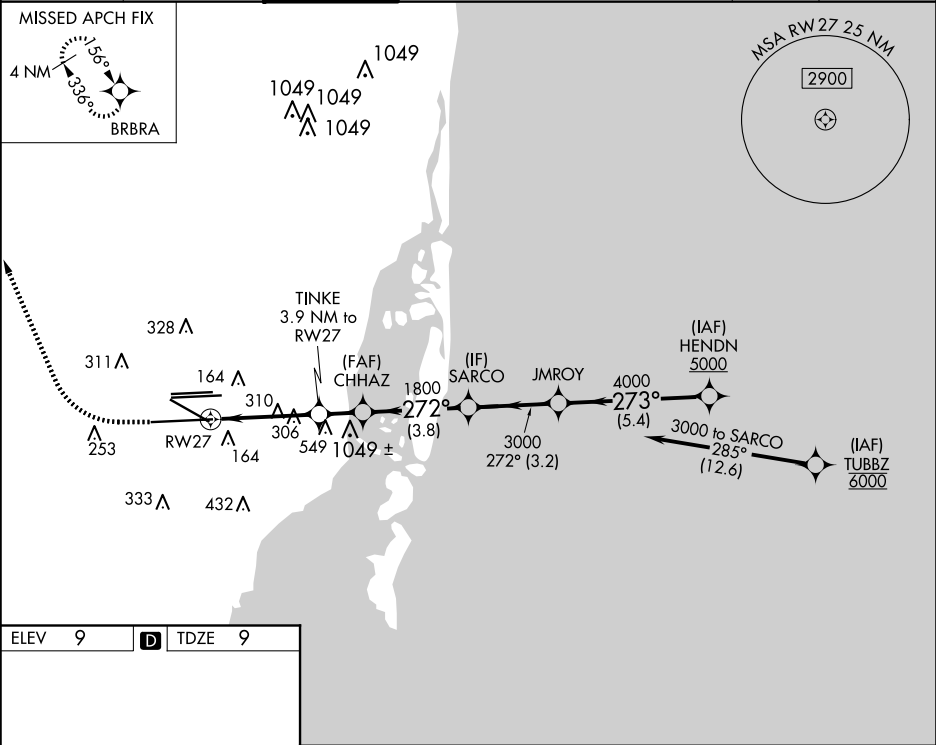
MIAMI TOWER
118.3 256.9

GND CON
121.8 (8L/8R/12/26L/26R)
127.5 (9/27/30)

348.6

CLNC DEL
135.35

CPDLC



ELEV 9 TDZE 9

800	4000	BRBRA	VGSI and RNAV glidepath not coincident (VGSI Angle 3.00°/TCH 71°).	HENDN	
CATEGORY	A		B	C	D
LPV DA*	209/24		200 (200-½)		
LNAV/VNAV DA	439/40		430 (500-¾)		
LNAV MDA	560/24		551 (600-½)		560/60 551 (600-¼)

TDZ/CL Rwy 8R
REIL Rwy 8L and 26R
HIRL all Rwy 8