


APP CRS	Rwy Idg	10506
092°	TDZE	8
	Apt Elev	9

RNAV (RNP) Y RWY 8R
MIAMI INTL (MIA)

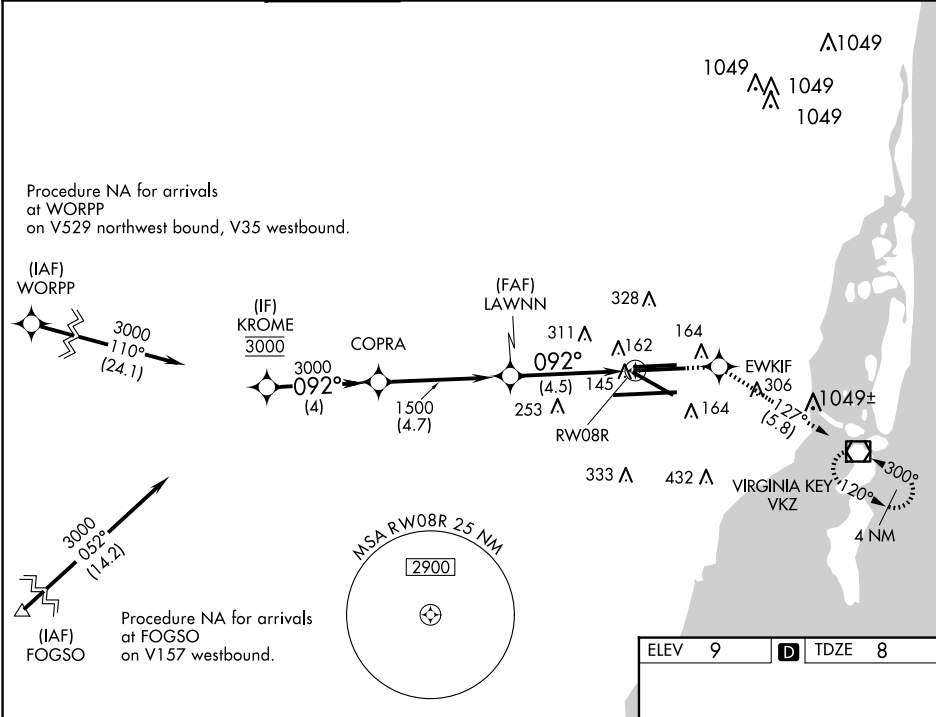
⚠ For uncompensated Baro-VNAV systems, procedure NA below 6°C (43°F) or above 54°C (130°F). GPS required. For inop MALSR, increase RNP 0.11 all Cats visibility to 1¼ mile.
*Missed approach requires minimum climb of 330 feet per NM to 600.

MALSR



MISSED APPROACH: Climb to 3000 direct EWKIF and on track 127° to VKZ VOR/DME and hold, continue climb-in-hold to 3000.

D-ATIS	MIAMI APP CON	MIAMI TOWER		GND CON	CLNC DEL	CPDLC
ARR 119.15	124.85 322.3	118.3 256.9	121.8 (8L/8R/12/26L/26R)	348.6	135.35	
DEP 133.675			127.5 (9/27/30)			



VGSI and RNAV glidepath not coincident (VGSI Angle 3.00/TCH 77).

3000 EWKIF tr 127° VKZ

KROME COPRA LAWNN RW08R

3000 092° 3000 1500

GP 3.00° TCH 51

4 NM 4.7 NM 4.5 NM

CATEGORY	A	B	C	D
*RNP 0.11 DA	397/45 389 (400-7/8)			
RNP 0.30 DA	458/50 450 (500-1)			

AUTHORIZATION REQUIRED

TDZ/CL Rwy 8R
REIL Rwy 8L and 26R
HIRL all Rwy 8

SE-3, 07 AUG 2025 to 04 SEP 2025

SE-3, 07 AUG 2025 to 04 SEP 2025