

MIAMI, FLORIDA

AL-257 (FAA)

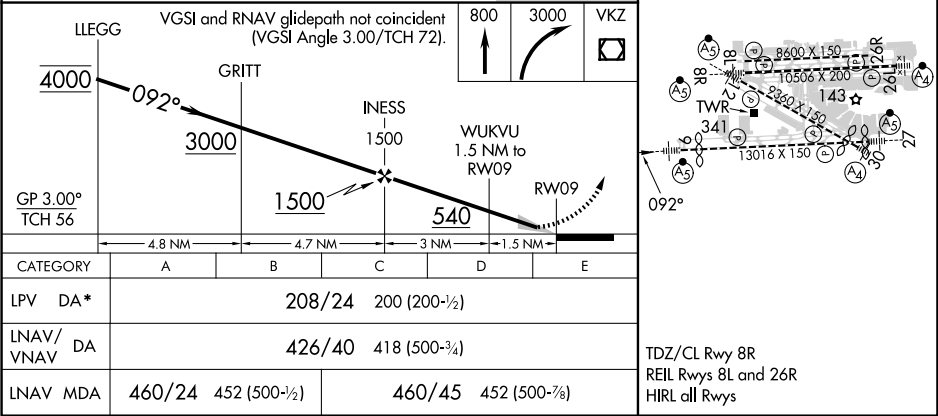
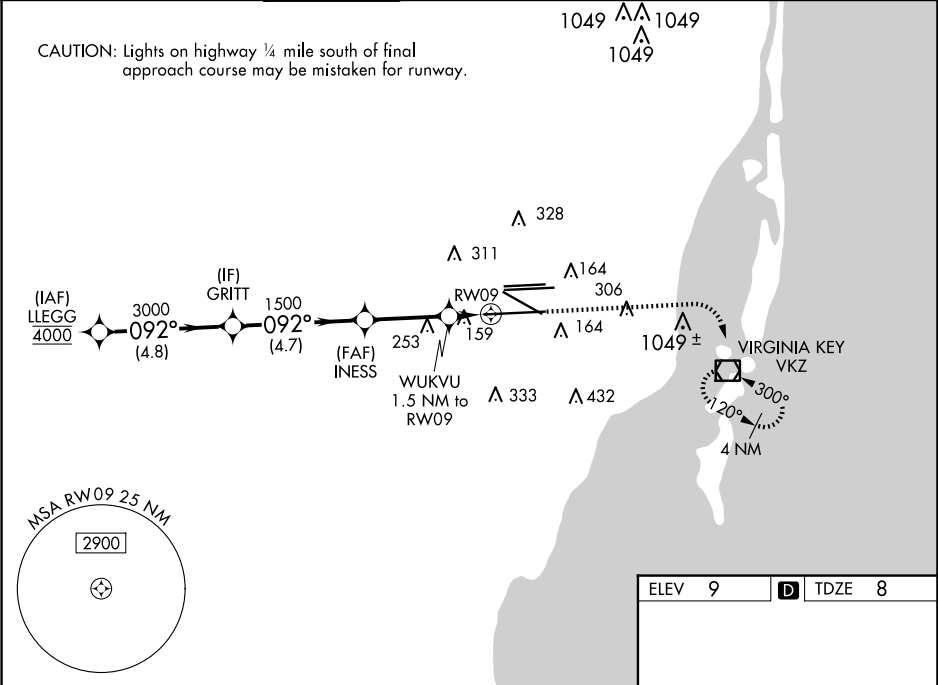
24137

WAAS CH <b>81931</b> <b>W09A</b>	APP CRS <b>092°</b>	Rwy Idg <b>11397</b> TDZE <b>8</b> Apt Elev <b>9</b>
--	------------------------	--

RNAV (GPS) RWY 9  
MIAMI INTL (MIA)

RNP APCH - GPS.		<div>MALSR</div> <div></div>	<div>MISSED APPROACH: Climb to 800 then climbing right turn to 3000 direct VKZ VOR/DME and hold, continue climb-in-hold to 3000.</div>
<div>▼</div> <div>For uncompensated Baro-VNAV systems, LNAV/VNAV NA below 8°C or above 54°C. Simultaneous approach authorized. LNAV procedure NA during simultaneous operations. Use of FD or AP required during simultaneous operations. For inop ALS, increase LPV Cat E visibility to RVR 4000, LNAV/VNAV all Cats visibility to RVR 6000, LNAV Cat E visibility to 1½ SM.</div> <div>*RVR 1800 authorized with use of FD or AP or HUD to DA.</div>			

D-ATIS ARR <b>119.15</b> DEP <b>133.675</b>	MIAMI APP CON <b>124.85 322.3</b>	MIAMI TOWER <b>118.3 256.9</b>	GND CON <b>121.8</b> (Rwys 8L/8R/12/26L/26R) <b>127.5</b> (Rwys 9/27/30)	<b>348.6</b>	CLNC DEL <b>135.35</b>	CPDLC
---	--------------------------------------	-----------------------------------	--	--------------	---------------------------	-------



MIAMI, FLORIDA  
Amdt 2 14JUL22

25°48'N-80°17'W

MIAMI INTL (MIA)  
RNAV (GPS) RWY 9

SE-3, 07 AUG 2025 to 04 SEP 2025

SE-3, 07 AUG 2025 to 04 SEP 2025