

MIAMI, FLORIDA

AL-257 (FAA)

24137

WAAS CH 86903 W26A	APP CRS 272°	Rwy Idg 8600 TDZE 9 Apt Elev 9
--	------------------------	---

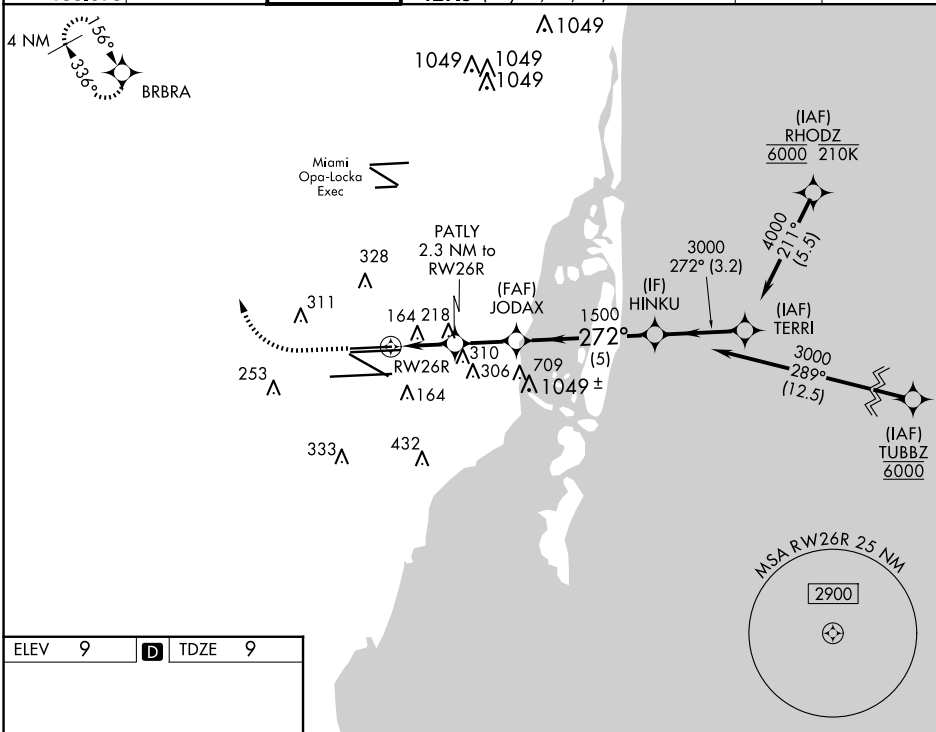
RNAV (GPS) RWY 26R
MIAMI INTL (MIA)

RNP APCH - GPS.

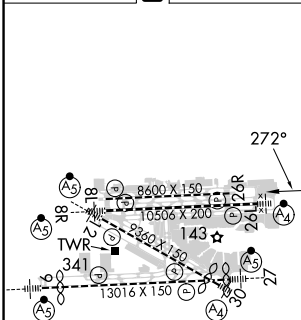
T Simultaneous approach authorized. LNAV procedure NA during simultaneous operations.
Use of FD or AP required during simultaneous operations.
For uncompensated Baro-VNAV systems, LNAV/VNAV NA below 9°C or above 54°C.

MISSED APPROACH: Climb to 800 then climbing right turn to 4000 direct BRBRA and hold, continue climb-in-hold to 4000.

D-ATIS	MIAMI APP CON		MIAMI TOWER		GND CON		CLNC DEL	CPDLC
ARR	119.15	124.85	322.3	118.3	256.9	121.8 (Rwys 8L/R, 12, 26L/R)	348.6	
DEP	133.675					127.5 (Rwys 9, 27, 30)	135.35	



ELEV	9	D	TDZE	9
------	---	----------	------	---



TDZ/CL Rwy 8R
REIL Rwys 8L and 26R
HRL all Rwys

CATEGORY	A	B	C	D
LPV DA	265- $\frac{3}{4}$	256 (300- $\frac{3}{4}$)		
LNAV/VNAV DA	432-1 $\frac{1}{4}$	423 (500-1 $\frac{1}{4}$)		
LNAV MDA	480-1	471 (500-1)	480-1 $\frac{3}{8}$	471 (500-1 $\frac{3}{8}$)

MIAMI, FLORIDA
Amdt 5 14JUL22

25°48'N-80°17'W

MIAMI INTL (MIA)

RNAV (GPS) RWY 26R

SE-3, 07 AUG 2025 to 04 SEP 2025