

PALMZ TWO ARRIVAL

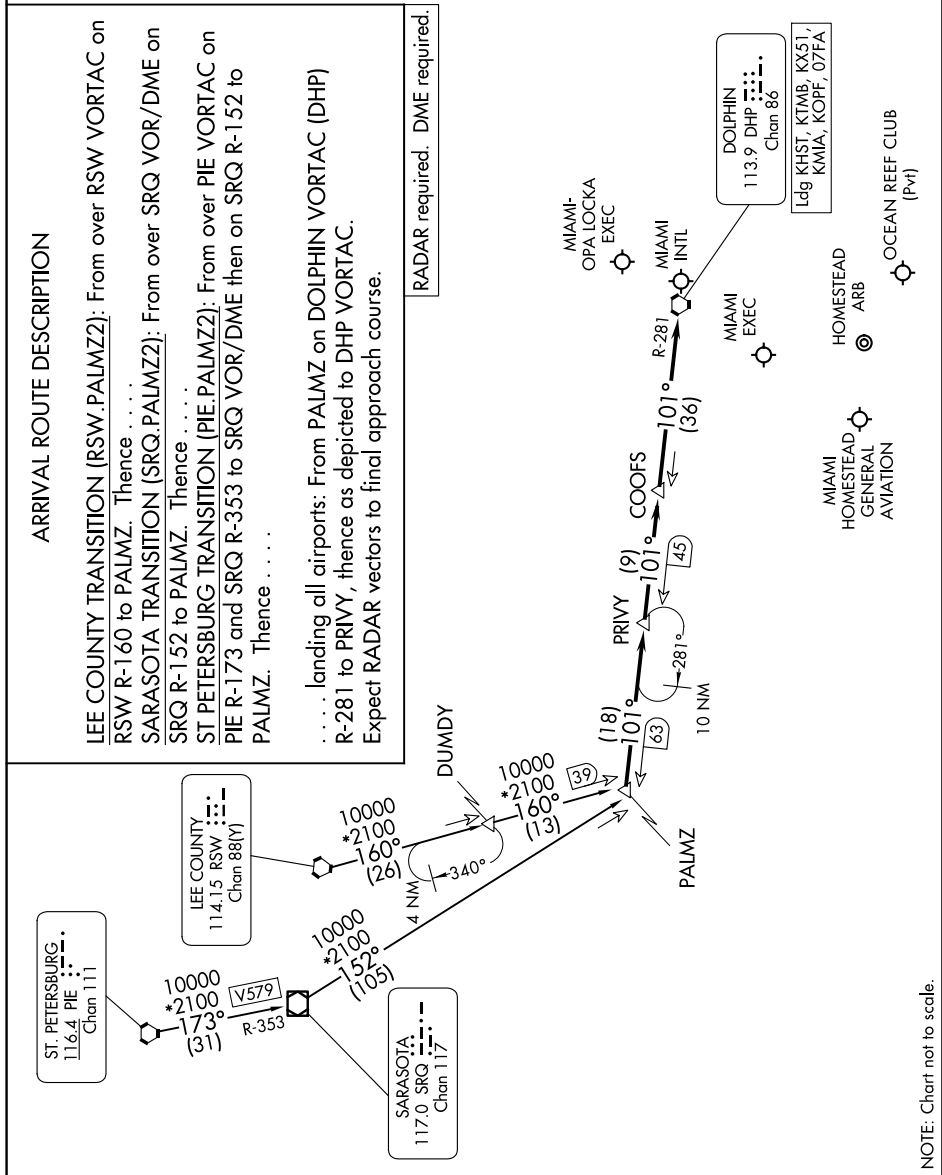
MIAMI, FLORIDA

MIAMI APP CON
120.5 350.225
KHST ATIS★
132.275 269.9
MIA D-ATIS
119.15
OPF ATIS
125.9
TMB ATIS
124.0

ARRIVAL ROUTE DESCRIPTION

LEE COUNTY TRANSITION (RSW.PALMZ2): From over RSW VORTAC on RSW R-160 to PALMZ. Thence
SARASOTA TRANSITION (SRQ.PALMZ2): From over SRQ VOR/DME on SRQ R-152 to PALMZ. Thence
ST PETERSBURG TRANSITION (PIE.PALMZ2): From over PIE VORTAC on PIE R-173 and SRQ R-353 to SRQ VOR/DME then on SRQ R-152 to PALMZ. Thence

RADAR required. DME required.



NOTE: Chart not to scale.

SE-3, 07 AUG 2025 to 04 SEP 2025

PALMZ TWO ARRIVAL

(PALMZ.PALMZ2) 02DEC21

MIAMI, FLORIDA