

MIAMI, FLORIDA

TOP ALTITUDE:
5000

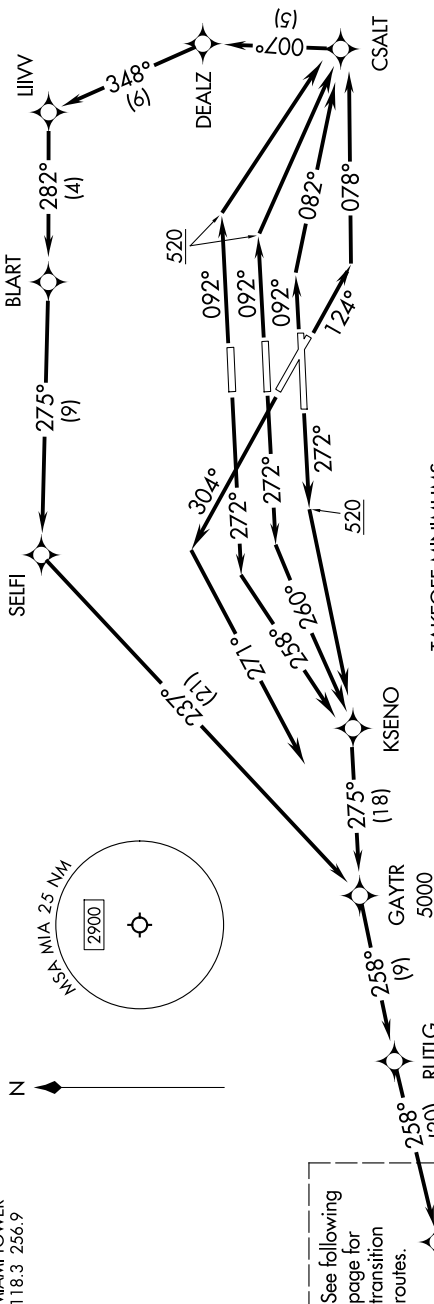
RNAV-1 DME/DME/IRU or GPS.

RADAR required for NON-GPS equipped aircraft.
RADAR required.

NOTE: Jet aircraft only.

NOTE: Accelerate to 250K until leaving 10000, if unable, advise ATC.

NOTE: SHAQQ and BAGGS transitions ATC assigned except aircraft departing MIA.



TAKEOFF MINIMUMS

Rwy 8L: Standard with minimum climb of 500'/NM to 520, then minimum climb of 215'/NM to 1400.

Rwy 8R: Standard with minimum climb of 500'/NM to 520, then minimum climb of 235'/NM to 1 400.

Rwy 9: Standard with minimum climb of 500'/NM to 520, then minimum climb of 240'/NM to 1 400.

Rwy 12: Standard with minimum climb of 500'/NM to 520, then minimum climb of 230'/NM to 1400.

Rwys 26L/R, 27, 30: Standard with minimum climb of 500'/NM to 520.

NOTE: Chart not to scale.

(CONTINUED ON FOLLOWING PAGE)

SE-3, 07 AUG 2025 to 04 SEP 2025