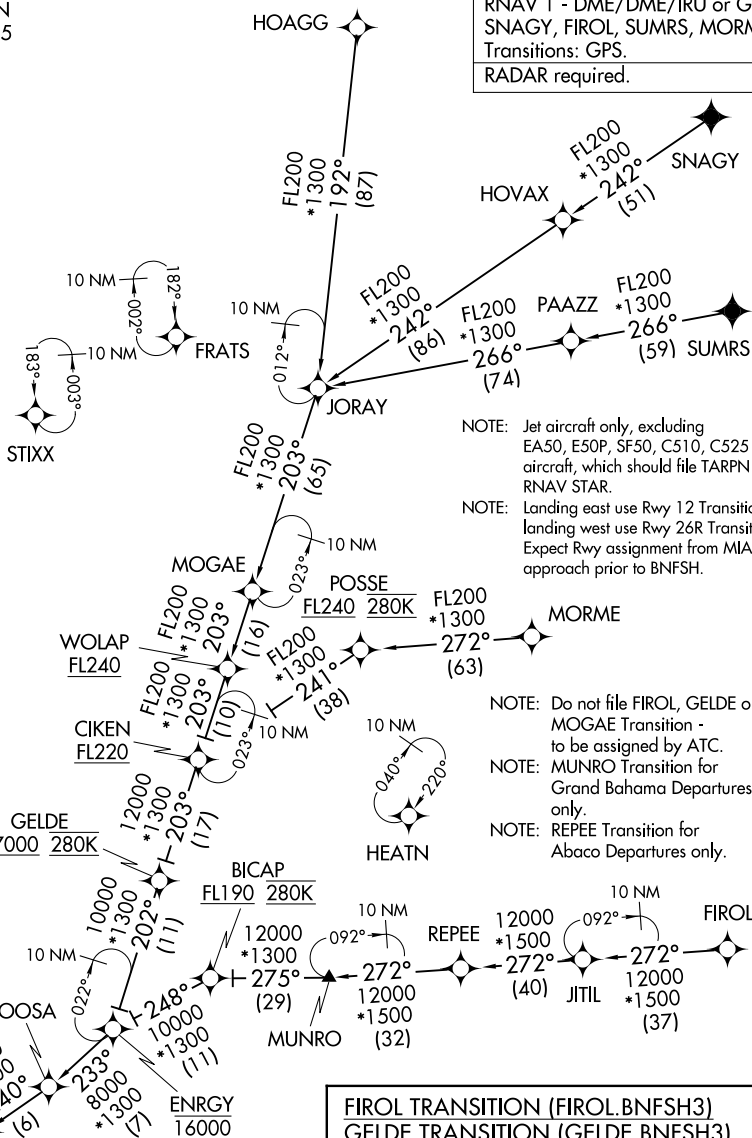


MIAMI, FLORIDA

RNAV 1 - DME/DME/IRU or GPS.
SNAGY, FIROL, SUMRS, MORME
Transitions: GPS.
RADAR required.



NOTE: Jet aircraft only, excluding EA50, E50P, SF50, C510, C525 aircraft, which should file TARPIN RNAV STAR.

NOTE: Landing east use Rwy 12 Transition, landing west use Rwy 26R Transition. Expect Rwy assignment from MIA approach prior to BNFSH.

200
300
77°
63)

MORME

NOTE: Do not file FIROL, GELDE or MOGAE Transition - to be assigned by ATC.

NOTE: MUNRO Transition for Grand Bahama Departures only.

NOTE: REPEE Transition for Abaco Departures only.

FIROL TRANSITION (FIROL.BNFSH3)
 GELDE TRANSITION (GELDE.BNFSH3)
 HOAGG TRANSITION (HOAGG.BNFSH3)
 MOGAE TRANSITION (MOGAE.BNFSH3)
 MORME TRANSITION (MORME.BNFSH3)
 MUNRO TRANSITION (MUNRO.BNFSH3)
 REPEE TRANSITION (REPEE.BNFSH3)
 SNAGY TRANSITION (SNAGY.BNFSH3)
 SUMRS TRANSITION (SUMRS.BNFSH3)

See following page
for arrival routes.

(CONTINUED ON
FOLLOWING PAGE)

NOTE: Chart not to scale.