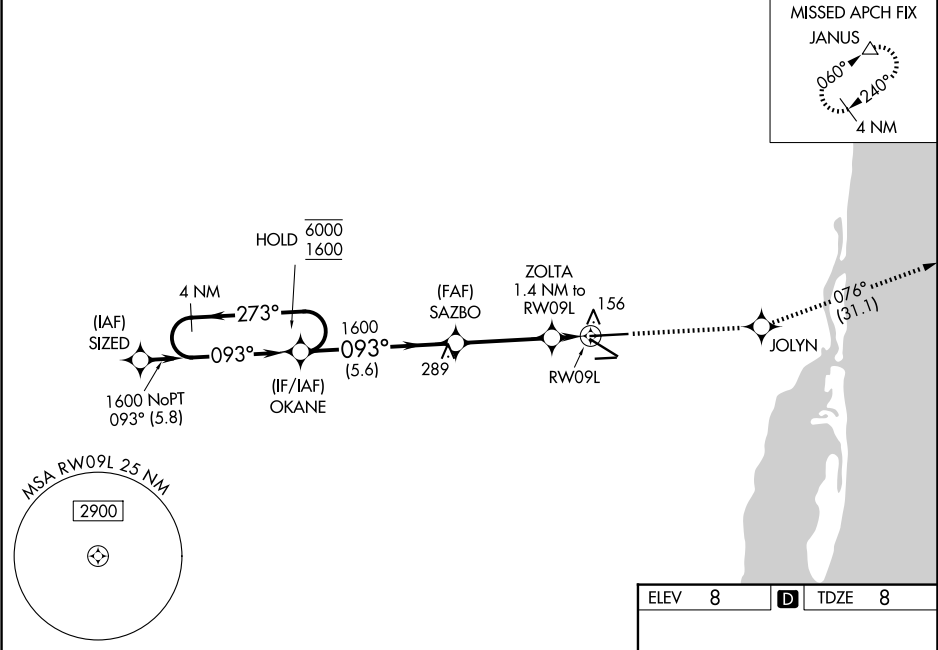


WAAS CH 53422 W09A	APP CRS 093°	Rwy Ldg TDZE Apt Elev	8002 8 8
--	------------------------	-----------------------------	-------------------------------------

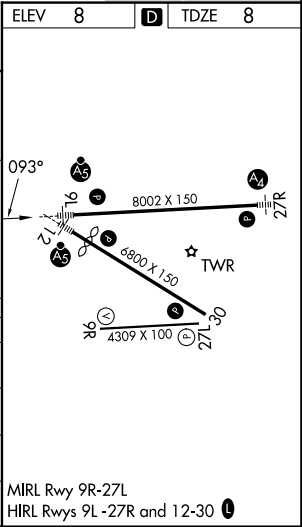
RNAV (GPS) RWY 9L

MIAMI-OPA LOCKA EXEC (OPF')

RNP APCH - GPS. ⚠ For uncompensated Baro-VNAV systems, LNAV/VNAV NA below 8°C or above 54°C. Rwy 9L helicopter visibility reduction below ¾ SM NA. Inop table does not apply to LPV all Cats. For inop ALS, increase LNAV/VNAV all Cats and LNAV Cats A and B visibility to 1 SM, and LNAV Cats C and D visibility to 1½ SM. Caution: Lights on highway 0.7 NM north may be mistaken for runway.			MALSR 	MISSED APPROACH: Climb to 2000 direct JOLYN and on 076° track to JANUS and hold.	
ATIS 125.9	MIAMI APP CON 128.6 306.975	OPA LOCKA TOWER ★ 134.675 (CTAF) 0	GND CON 120.025	CLNC DEL 119.2	GCO 119.45



VGSI and RNAV glidepath not coincident (VGSI Angle 3.00/TCH 55).				
4 NM Holding Pattern OKANE SAZBO JOLYN JANUS				
6000 ← 273° 1600 093° → 093° 1600 500 ZOLTA 1.4 NM to RWY 9L RWY 9L				
GP 3.00° TCH 51 5.6 NM 3.5 NM 1.4 NM				
CATEGORY	A	B	C	D
LPV DA		258-¾	250 (300-¾)	
LNAV/VNAV DA		337-¾	329 (400-¾)	
LNAV MDA		420-¾	412 (500-¾)	
CIRCLING	480-1 472 (500-1)	520-1 512 (600-1)	620-1¾ 612 (700-1¾)	740-2¼ 732 (800-2¼)



SE-3, 07 AUG 2025 to 04 SEP 2025

SE-3, 07 AUG 2025 to 04 SEP 2025