

WAAS CH 53644 W30A	APP CRS 308°	Rwy Ldg TDZE Apt Elev	6800 8 8
--	------------------------	-----------------------------	-------------------------------------

RNAV (GPS) RWY 30

MIAMI-OPA LOCKA EXEC (OPF')

RNP APCH - GPS.

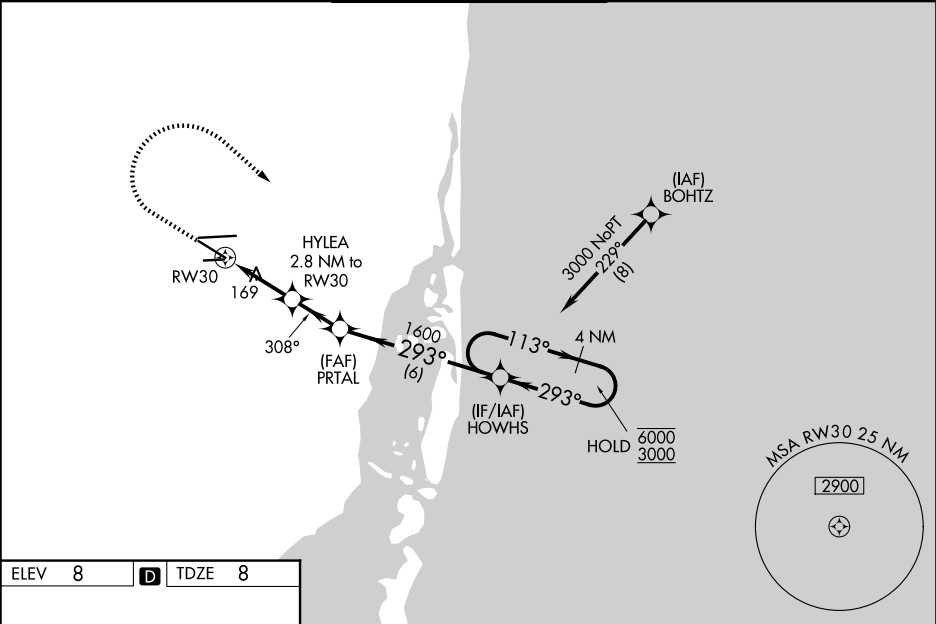
▼

⚠

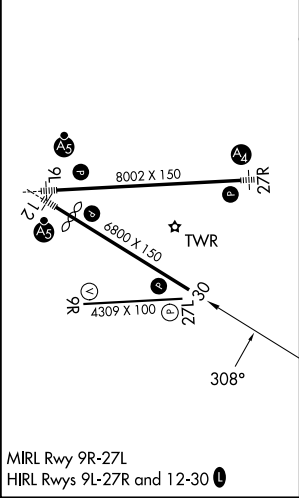
Baro-VNAV and VDP NA when using Miami Intl altimeter setting.
Rwy 30 helicopter visibility reduction below ¾ SM NA. For uncompensated Baro-VNAV systems, LNAV/VNAV NA below 7°C or above 54°C. When local altimeter setting not received, use Miami Intl altimeter setting: increase LPV DA to 276 feet and all visibilities ⅛ SM; increase LNAV/VNAV DA to 438 feet and all visibilities ⅛ SM; increase all MDAs 20 feet and LNAV visibility Cat C/D ⅛ SM and Circling visibility Cat D ¼ SM.

MISSED APPROACH: Climb to 800 then climbing right turn to 3000 direct HOWHS and hold, continue climb-in-hold to 3000.

ATIS 125.9	MIAMI APP CON 128.6 306.975	OPA LOCKA TOWER ★ 134.675 (CTAF) 0	GND CON 120.025	CLNC DEL 119.2	GCO 119.45
----------------------	---------------------------------------	--	---------------------------	--------------------------	----------------------



ELEV 8	D	TDZE 8
---------------	----------	---------------



800		3000	HOWHS	4 NM Holding Pattern	
↑		↷	✧		
RWY 30		1.1 NM to PRTAL	2.8 NM to HOWHS	6000 3000	
1.1 NM		1.7 NM	2 NM	6 NM	
CATEGORY	A	B	C	D	
LPV DA	258-¾		250 (300-¾)		
LNAV/VNAV DA	420-1⅛		412 (500-1⅛)		
LNAV MDA	420-1	412 (500-1)	420-1⅛	412 (500-⅛)	
CIRCLING	480-1 472 (500-1)	520-1 512 (600-1)	620-1¾ 612 (700-1¾)	740-2¼ 732 (800-2¼)	