

MIAMI, FLORIDA

AL-256 (FAA)

25219

WAAS CH 62922 W27A	APP CRS 273°	Rwy Ldg 8002 TDZE 8 Apt Elev 8
--	------------------------	---

RNAV (GPS) RWY 27R

MIAMI-OPA LOCKA EXEC (OPF)

RNP APCH - GPS.

V Baro-VNAV NA when using Miami Intl altimeter setting. For uncompensated Baro-VNAV systems, LNAV/VNAV NA below 5°C or above 54°C. When local altimeter setting not received, use Miami Intl altimeter setting and increase all DA/MDA 20 feet and Circling Cat D visibility ¼ SM. For inop ALS, increase LPV all Cats visibility to ¾ SM, LNAV/VNAV all Cats to 1½ SM, and LNAV Cats C and D visibility to 1½ SM. Rwy 27R helicopter visibility reduction below ¾ SM NA.

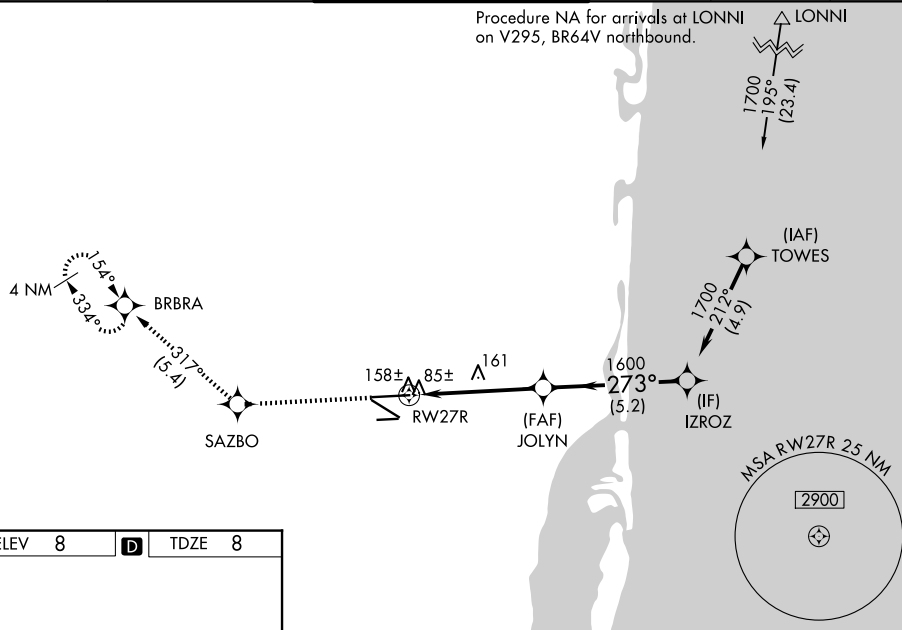
MALS



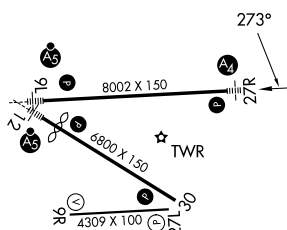
MISSED APPROACH: Climb to 2000 direct SAZBO and on track 317° to BRBRA and hold.

ATIS 125.9	MIAMI APP CON 128.6 306.975	OPA LOCKA TOWER ★ 134.675 (CTAF) 0	GND CON 120.025	CLNC DEL 119.2	GCO 119.45
----------------------	---------------------------------------	--	---------------------------	--------------------------	----------------------

Procedure NA for arrivals at LONNI LONNI
on V295, BR64V northbound.

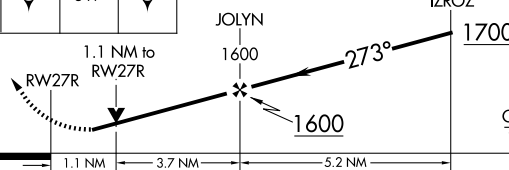


ELEV	8	D	TDZE	8
------	---	----------	------	---



MIRL Rwy 9R-27L

HURL Rwy 9L-27R and 12-30 **L**

2000 ↑	SAZBO ☼	tr 317°	BRBRA ☼						
				GP 3.00° TCH 58					
CATEGORY		A		B		C		D	
LPV	DA	291- ³ / ₄				283 (300- ³ / ₄)			
INAV/ VNAV	DA	413-1				405 (500-1)			
INAV	MDA	420- ³ / ₄	412 (500- ³ / ₄)			420-1		412 (500-1)	
CIRCLING		540-1	532 (600-1)			620-1 ³ / ₄ 612 (700-1 ³ / ₄)		740-2 ¹ / ₄ 732 (800-2 ¹ / ₄)	

MIAMI, FLORIDA

Orig-E 11JUL24

25°54'N-80°17'W

MIAMI-OPA LOCKA EXEC (OPF)

RNAV (GPS) RWY 27R

SE-3, 07 AUG 2025 to 04 SEP 2025

SE-3, 07 AUG 2025 to 04 SEP 2025