


WAAS CH 69522 W12A	APP CRS 128°	Rwy Ldg TDZE Apt Elev	6000 8 8
--	------------------------	-----------------------------	-------------------------------------

RNAV (GPS) RWY 12

MIAMI-OPA LOCKA EXEC (OPF)

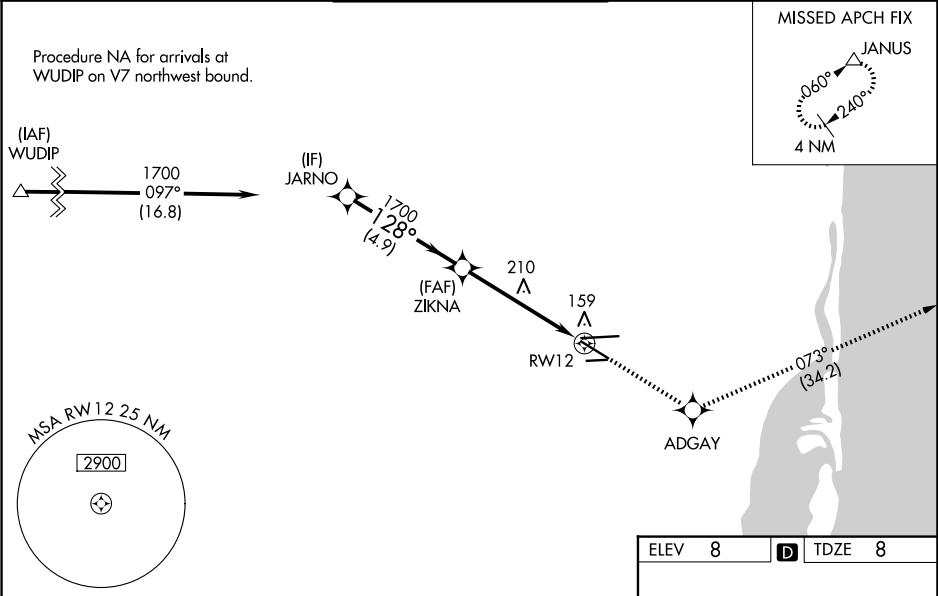
▼ Baro-VNAV NA when using Miami Intl altimeter setting. For uncompensated Baro-VNAV systems, LNAV/VNAV NA below -1.5°C (5°F) or above 43°C (109°F). Helicopter visibility reduction below ¾ SM NA. DME/DME RNP-0.3 NA. VDP NA with Miami Intl altimeter setting. When local altimeter setting not received, use Miami Intl altimeter setting and increase all DA/MDA 20 feet and Circling Cat D visibility ¼ SM. Inop table does not apply. For inop MALSR, increase LNAV/VNAV all Cats visibility and LNAV Cats A and B to 1 mile and LNAV Cats C and D visibility to 1½ miles. For inop MALSR, when using Miami Intl altimeter setting, increase LNAV/VNAV all Cats visibility and LNAV Cats A and B visibility to 1 mile.

MALSR

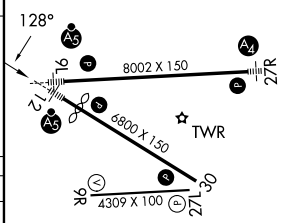


MISSED APPROACH:
Climb to 2000 direct
ADGAY and on track
073° to JANUS and
hold.

ATIS 125.9	MIAMI APP CON 128.6 306.975	OPA LOCKA TOWER ★ 134.675 (CTAF) 0	GND CON 120.025	CLNC DEL 119.2	GCO 119.45
----------------------	---------------------------------------	--	---------------------------	--------------------------	----------------------



ELEV 8		D TDZE 8	
JARNO		ZIKNA	
1700		1700	
GP 3.00° TCH 53		*LNAV only.	
4.9 NM		3.7 NM	
1.5 NM		RW12	
CATEGORY		A B C D	
LPV DA		208-¾ 200 (200-¾)	
LNAV/VNAV DA		320-¾ 312 (400-¾)	
LNAV MDA		520-¾ 512 (600-¾)	
CIRCLING		540-1 532 (600-1)	
		620-1¾ 612 (700-1¾)	
		740-2¼ 732 (800-2¼)	



MIRL Rwy 9R-27L
HIRL Rwy 9L-27R and 12-30 0