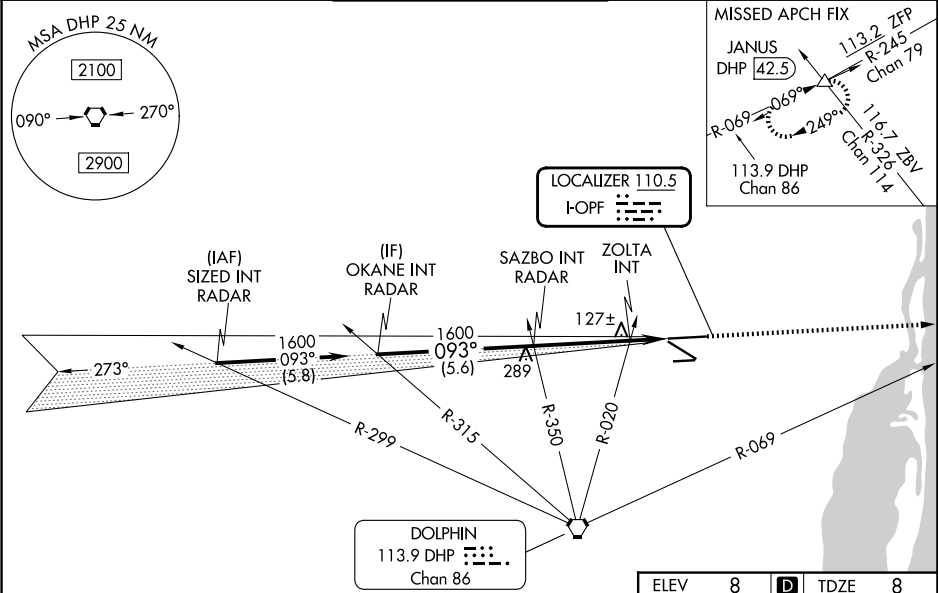


LOC I-OPF 110.5	APP CRS 093°	Rwy Ldg TDZE Apt Elev 8002 8 8
---------------------------	------------------------	--

ILS or LOC RWY 9L

MIAMI-OPA LOCKA EXEC (OPF)

RADAR required.			<div>MALSR</div> <div></div>	MISSED APPROACH: Climb to 2000 on heading 093° and DHP VORTAC R-069 to JANUS INT/DHP 42.5 DME and hold.	
<div><div><div></div><div></div></div><div>Inop table does not apply to S-ILS 9L all Cats. Rwy 9L helicopter visibility reduction below ¾ SM NA. For inop ALS, increase S-LOC 9L Cats A and B visibility to 1 SM and Cats C and D visibility to 1 ¾ SM. ZOLTA Fix Minimums, for inop ALS, increase S-LOC 9L all Cats visibility to 1 SM. Autopilot coupled approach NA below 400 feet. Caution: Lights on highway 0.7 NM north may be mistaken for runway.</div></div>					
ATIS 125.9	MIAMI APP CON 128.6 306.975	OPA LOCKA TOWER ★ 134.675 (CTAF) 0	GND CON 120.025	CLNC DEL 119.2	GCO 119.45



VGSI and ILS glidepath not coincident (VGSI Angle 3.00/TCH 55).		2000	DHP R-069	JANUS
OKANE INT RADAR		1600	hdg 093°	△
SAZBO INT RADAR		1600		
ZOLTA INT		480		
GS 3.00° TCH 51		5.6 NM	3.3 NM	1.5 NM
CATEGORY	A	B	C	D
S-ILS 9L	258-¾		250 (300-¾)	
S-LOC 9L	480-¾	472 (500-¾)	480-1	472 (500-1)
CIRCLING	480-1	520-1	620-1¾	740-2¼
	472 (500-1)	512 (600-1)	612 (700-1¾)	732 (800-2¼)
ZOLTA FIX MINIMUMS				
S-LOC 9L	380-¾		372 (400-¾)	
CIRCLING	480-1	520-1	620-1¾	740-2¼
	472 (500-1)	512 (600-1)	612 (700-1¾)	732 (800-2¼)

ELEV 8

TDZE 8

093°

8002 X 150

6800 X 150

4309 X 100

27L

TWR

MIRL Rwy 9R-27L

HIRL Rwys 9L-27R and 12-30

FAF to MAP 4.8 NM

Knots	60	90	120	150	180
Min:Sec	4:48	3:12	2:24	1:55	1:36