

25219

LOC/DME I-OLX <b><u>111.55</u></b> Chan <b>52</b> (Y)	APP CRS <b>128°</b>	Rwy Ldg <b>6000</b> TDZE <b>8</b> Apt Elev <b>8</b>
---	------------------------	---

ILS or LOC RWY 12  
MIAMI-OPA LOCKA EXEC(OPF)

**T** Inop table does not apply to S-ILS 12. Helicopter visibility reduction below  $\frac{3}{4}$  SM NA. VDP NA with Miami Intl altimeter setting. When local altimeter setting not received, use Miami Intl altimeter setting and increase all DA/MDA 20 feet and Circling Cat D visibility  $\frac{1}{4}$  SM. For inop MALSR, increase S-LOC 12 Cats A and B visibility to 1 mile and Cats C and D visibility to  $\frac{1}{2}$  miles.

MALSR



**MISSED APPROACH:** Climb to 800 then climbing left turn to 2000 on heading 090° and DHP VORTAC R-069 to JANUS INT/DHP 42.5 DME and hold.

ATIS <b>125.9</b>	MIAMI APP CON <b>128.6 306.975</b>	OPA LOCKA TOWER ★ <b>134.675 (CTAF) 0</b>	GND CON <b>120.025</b>	CLNC DEL <b>119.2</b>	GCO <b>119.45</b>
----------------------	---------------------------------------	--	---------------------------	--------------------------	----------------------

## RADAR REQUIRED

MISSED APCH FIX

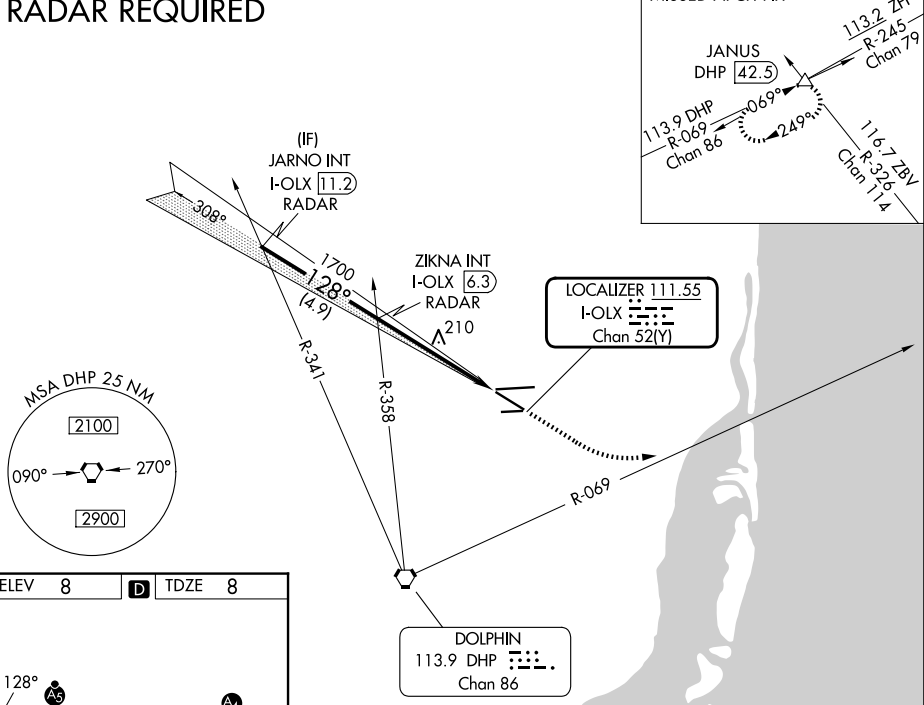


Diagram illustrating the HIRL (High Intensity Runway Lighting) system for MIRA Airstrip. The diagram shows the layout of the runways and the associated lighting system. Key features include:

- Runway 9R (8002 x 150) and Runway 2L (6800 x 150) are shown at a 128-degree angle.
- Runway 27R is also indicated.
- The diagram includes various navigation aids and lighting components, such as A5, A4, and TWR (Tower).
- A 4309 x 100 area is marked near the 2L runway.

JARNO INT I-OLX <span style="border: 1px solid black; padding: 2px;">11.2</span> RADAR		ZIKNA INT I-OLX <span style="border: 1px solid black; padding: 2px;">6.3</span> RADAR		800 ↑	2000 hdg 090°	DHP R-069	JANUS △
*LOC only.							
CATEGORY	A		B		C		D
S-ILS 12	208- <sup>3</sup> / <sub>4</sub> 200 (200- <sup>3</sup> / <sub>4</sub> )						
S-LOC 12	520- <sup>3</sup> / <sub>4</sub> 512 (600- <sup>3</sup> / <sub>4</sub> )				520-1 512 (600-1)		
CIRCLING	540-1 532 (600-1)				620- <sup>13</sup> / <sub>4</sub> 612 (700- <sup>13</sup> / <sub>4</sub> ) 740- <sup>2</sup> / <sub>4</sub> 732 (800- <sup>2</sup> / <sub>4</sub> )		

MIAMI, FLORIDA  
Amdt 2C 02DEC21

25°54'N-80°17'W

MIAMI-OPA LOCKA EXEC (OPF)  
ILS or LOC RWY 12

SE-3, 07 AUG 2025 to 04 SEP 2025