

WAAS CH <b>86500</b> <b>W01A</b>	APP CRS <b>011°</b>	Rwy Ldg TDZE <b>289</b> Apt Elev <b>298</b>	<b>9013</b>
--	------------------------	---	-------------

RNAV (GPS) RWY 1

KEY FLD (MEI)

▼

▲

For uncompensated Baro-VNAV systems, LNAV/VNAV NA below -8°C (18°F) or above 54°C (130°F). Circling NA southeast of Rwy 1 and 22. DME/DME RNP-0.3 NA.

When local altimeter setting not received, use Hattiesburg/Laurel Rgnl altimeter setting and increase all DA 138 feet and all MDA 140 feet, LPV all Cats visibility to RVR 3100, LNAV/VNAV all Cats and LNAV Cats C, D, and E visibilities to 1½ mile, and Circling Cat C visibility ½ mile and Cat D visibility ¼ mile. For inop MALSR increase LPV Cat E to RVR 4000, LNAV/VNAV Cat E visibility to RVR 6000, and LNAV Cat E visibility to 1½ mile. For inop MALSR when using Hattiesburg/Laurel Rgnl altimeter setting, increase LPV all Cats visibility to RVR 5000, LNAV/VNAV Cat E visibility to 1½ mile, and LNAV Cat E visibility to 1¾ mile. VDP and Baro-VNAV NA when using Hattiesburg/Laurel Rgnl altimeter setting. Night landing: Rwy 22 NA. \*\* RVR 1800 authorized with use of FD or AP or HUD to DA, NA when using Hattiesburg/Laurel Rgnl altimeter setting.

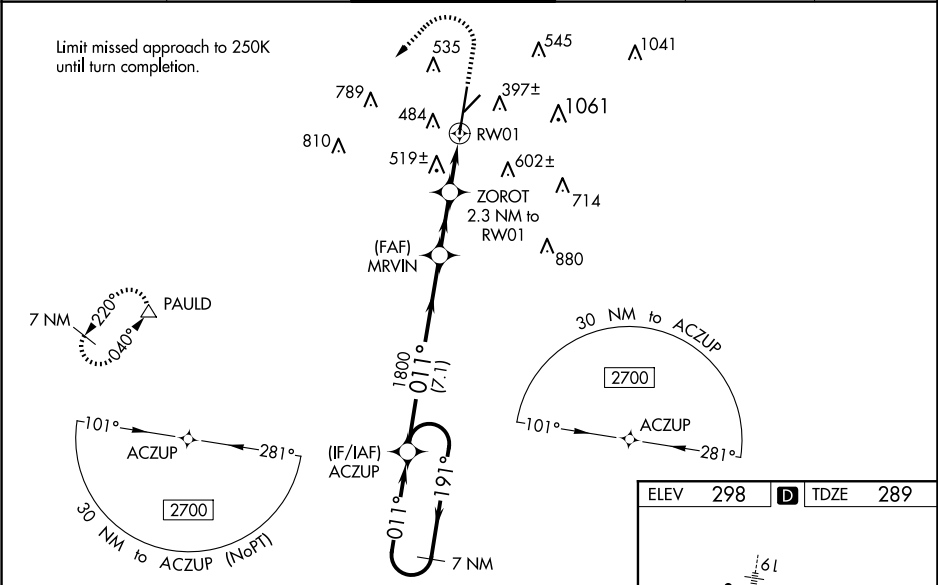
MALSR

A5

MISSED APPROACH:

Climb to 800 then climbing left turn to 3000 direct PAULD and hold.

ATIS <b>126.475 291.675</b>	MERIDIAN APP CON ★ <b>120.5 269.325</b>	KEY TOWER ★ <b>133.975 (CTAF) 257.8</b>	GND CON <b>121.9 348.6</b>	CLNC DEL <b>121.9 348.6</b>	UNICOM <b>122.95</b>
--------------------------------	--	--	-------------------------------	--------------------------------	-------------------------



7 NM Holding Pattern		ACZUP		MRVIN		ZOROT 2.3 NM to RW01		PAULD	
2700		191°		011°		1800		*1060	
GP 3.00° TCH 55						*1.4 NM to RW01		*LNAV only.	
		7.1 NM		2.3 NM		0.9 NM		1.4 NM	
CATEGORY	A	B	C	D	E				
LPV DA **	489/24		200 (200-½)						
LNAV/VNAV DA	709/47		420 (500-1)						
LNAV MDA	780/24	491 (500-½)	780/50		491 (500-1)				
CIRCLING	860-1	880-1	960-1¾	1120-2¾	1120-3				
	562 (600-1)	582 (600-1)	662 (700-1¾)	822 (900-2¾)	822 (900-3)				

