

LOC I-MEI 110.1	APP CRS 011°	Rwy Ldg TDZE 289 Apt Elev 298
---------------------------	------------------------	---

ILS or LOC RWY 1
KEY FLD (MEI)

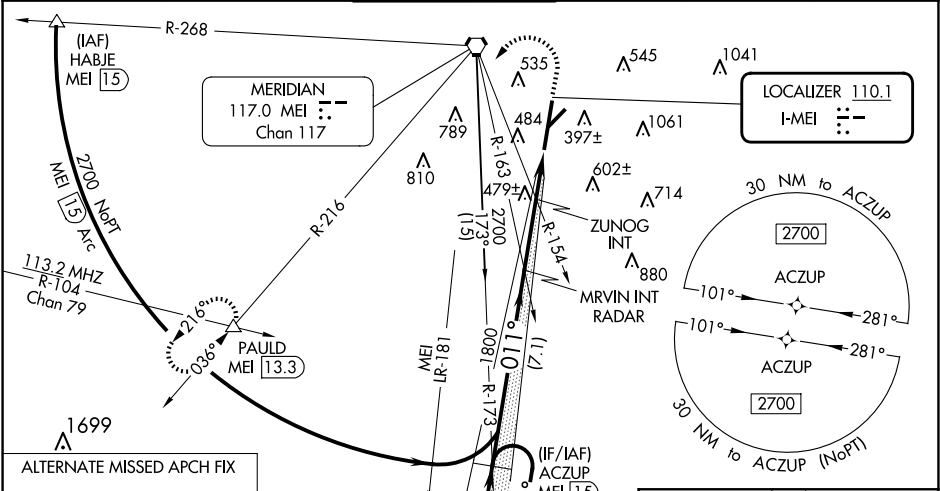
RNAV 1- GPS or DME required for procedure entry.

⚠ Circling NA southeast of Rwy 1 and 22. When local altimeter not received, use Hattiesburg/Laurel Rgnl altimeter setting and increase all DA 138 feet and all MDA 140 feet, S-ILS 1 all Cats visibility to RVR 3500, S-LOC 1 Cat B visibility to RVR 4000, Cat C, D, and E visibility ¾ mile, and Circling Cats B and D visibility ¼ mile, Cat C visibility ½ mile; increase ZUNOG Fix minimums S-LOC 1 Cats C, D, and E to RVR 6000, and Circling Cat C visibility ½ mile, Cat D and E visibility ¼ mile. For inop MALSR when using Hattiesburg/Laurel Rgnl altimeter setting, increase S-ILS 1 all Cats visibility to RVR 6000 and S-LOC 1 Cat E visibility to 1 ¾ mile; increase ZUNOG Fix minimums S-LOC 1 Cat E visibility to 2 miles. Circling Rwy 22 NA at night. ** RVR 1800 authorized with use of FD or AP or HUD to DA (NA when using Hattiesburg/Laurel Rgnl altimeter setting).

MALS

MISSED APPROACH:
Climb to 1100 then climbing left turn to 3000 on MEI VORTAC R-216 to PAULD INT/MEI 13.3 DME and hold.

ATIS 126.475 291.675	MERIDIAN APP CON ★ 120.5 269.325	KEY TOWER ★ 133.975 (CTAF) 0 257.8	GND CON 121.9 348.6	CLNC DEL 121.9 348.6	UNICOM 122.95
--------------------------------	--	--	-------------------------------	--------------------------------	-------------------------



113.2 MHZ R-094 Chan 79 CUNEV MHZ 46						ELEV 298		D TDZE 289	
One Minute Holding Pattern 2700 ← 191° 011° → 011°		ACZUP MEI 15		MRVIN INT RADAR		1100 3000 MEI R-216		PAULD △	
GS 3.00° TCH 55		1800		ZUNOG INT		*LOC only.		*900	
		7.1 NM		2.6 NM		2 NM			
CATEGORY	A	B	C	D	E				
S-ILS 1	** 489/24 200 (200-½)								
S-LOC 1	900/24	611 (700-½)	900-1¾			611 (700-1¾)			
CIRCLING	900-1	602 (700-1)	960-1¾	1120-2¾	1120-3				
			662 (700-1¾)	822 (900-2¾)	822 (900-3)				
ZUNOG FIX MINIMUMS									
S-LOC 1	700/24	411 (500-½)	700/40			411 (500-¾)			
CIRCLING	860-1	880-1	960-1¾	1120-2¾	1120-3				
	562 (600-1)	582 (600-1)	662 (700-1¾)	822 (900-2¾)	822 (900-3)				
FAF to MAP 4.6 NM									
Knots	60	90	120	150	180				
Min:Sec	4:36	3:04	2:18	1:50	1:32				

MIRL Rwy 4-22
HIRL Rwy 1-19