

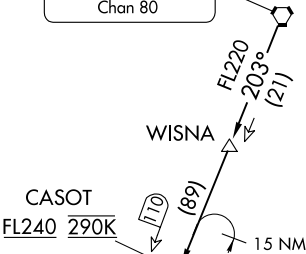
(WLDER.WLDER1) 23334  
WLDER ONE ARRIVAL

AL-253 (FAA)

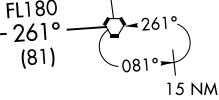
MEMPHIS INTL (MEM)  
MEMPHIS, TENNESSEE

MEMPHIS APP CON  
119.1 291.6 (176°-355°)  
125.8 338.3 (356°-175°)  
D-ATIS  
127.75

POCKET CITY  
113.3 PXV  
Chan 80



NASHVILLE  
114.1 BNA  
Chan 88



MC KELLAR  
114.85 MKL  
Chan 95(Y)

LTOWN  
Landing North:  
16000  
14000  
Landing South:  
10000 230K

MRCEL  
12000 250K  
10000

DASAC  
11000  
9000

CLARK  
8000 210K

MEMPHIS  
117.5 MEM  
Chan 122

- NOTE: DME and RADAR required.  
NOTE: Procedure NA for RNAV capable jets.  
NOTE: RNAV capable jets must file the BLUZZ RNAV STAR.  
NOTE: Maintain last assigned altitude until cleared to "Descend via the WLDER ONE", then comply with altitude restrictions as published.

(NARRATIVE ON FOLLOWING PAGE)

NOTE: Chart not to scale.

WLDER ONE ARRIVAL  
(WLDER.WLDER1) 24MAR22

MEMPHIS, TENNESSEE  
MEMPHIS INTL (MEM)

SE-1, 07 AUG 2025 to 04 SEP 2025

SE-1, 07 AUG 2025 to 04 SEP 2025