

WAAS CH <b>56606</b> <b>W18A</b>	APP CRS <b>180°</b>	Rwy Idg TDZE Apt Elev	<b>9320</b> <b>295</b> <b>341</b>
--	------------------------	-----------------------------	---

## RNAV (GPS) Z RWY 18R

MEMPHIS INTL (MEM)

RNP APCH - GPS.

**T** Simultaneous approach authorized. For uncompensated Baro-VNAV systems, LNAV/VNAV NA below -15°C or above 54°C. LNAV procedure NA during simultaneous operations. Use of FD or AP required during simultaneous operations. For inop ALS, increase LNAV/VNAV all Cats visibility to 1½ SM.

MALSR



**MISSED APPROACH:**

Climb to 900 then climbing  
right turn to 5000 direct  
JEPOB and hold.

MEMPHIS APP CON

<b>119.1</b>	<b>291.6</b>	(176°-355°)
<b>125.8</b>	<b>338.3</b>	(356°-175°)

## MEMPHIS TOWER

(Rwy 9-27)	<b>118.3</b>	<b>257.8</b>
(Rwys 18C-36C, 18L-36R)	<b>119.7</b>	<b>257.8</b>
(Rwy 18R-36L)	<b>128.425</b>	<b>257.8</b>

GND CON

(Rwy 9-27)	<b>121.0</b>	<b>379.2</b>
(Rwys 18C-36C, 18L-36R)	<b>121.9</b>	<b>379.2</b>
(Rwy 18R-36L)	<b>121.65</b>	<b>379.2</b>

D-ATIS

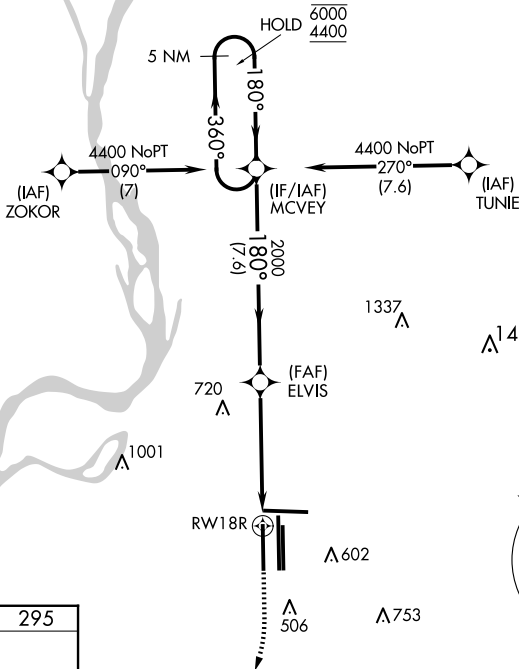
127.75

CLNC DEL

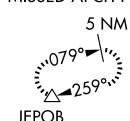
## 125.2

255:2

CPDLC



MISSED APCH FIX

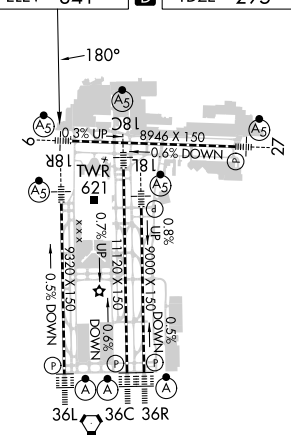


ELEV 3

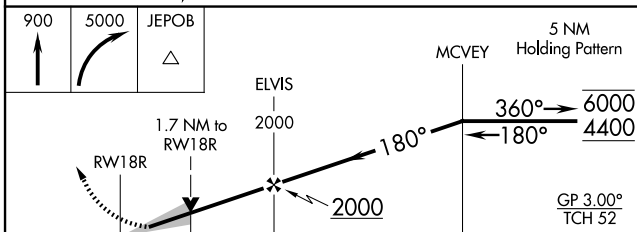
**P**

TDZ

295



TDZ/CL Rwy 18L, 18C,  
18R, 36R, 36C, and 36L  
HIRL all Rwy



		1.7 NM		3.5 NM		7.6 NM			
CATEGORY		A		B		C		D	
LPV	DA	495/18		200 (200-½)					
LNAV/ VNAV	DA	874-1¼		579 (600-1¼)					
LNAV MDA		880/24		585 (600-½)		880-1¼		585 (600-1¼)	
<b>C</b> CIRCLING		940-1		599 (600-1)		940-1¾ 599 (600-1¾)		1020-2¼ 679 (700-2¼)	

RNAV (GPS) Z RWY 18R